



OLD STURBRIDGE VILLAGE

Annual Report

FISCAL YEAR 2020



ANNUAL REPORT

CONTENT MAP

Letter from Jim Donahue | **page 1**

Bigger than a Building – our New Cabinetmaking Shop | **page 3**

Thank you: Jane and Dennis Neslusan
page 4

Christmas by Candlelight Sets a New Record | **page 6**

An Innovative New Vision for Interpretation and Education | **page 8**

A Groundbreaking New Partnership
page 13

Thank you:
Rhode Island Foundation | **page 16**

Thank you:
The Hibbitt Family Fund | **page 17**

19th-Century Museum Becomes
21st Century Community Learning Center
page 19

Donor Profile: Madeline and Todd Smola
page 21

National President Visits
Better World Day | **page 22**

Inaugural Joan M. McGrath Memorial Dinner
and Lecture | **page 24**



page 27 | Thank you: Cornerstone Bank

page 28 | 12th Annual Gala:
Autumn in the Village

page 30 | Where Your Gift Goes

page 31 | Financial Summary

page 32 | Donor Lists

page 34 | Thank you: George F. Booth II
and Penny Dewar-Booth

page 38 | Thank you:
Leigh and Jeffrey Giarde

page 50 | Preserving Our Collections

page 55 | Redcoats & Rebels

page 59 | Thank you: Donna DeCorleto

page 60 | Welcoming New American
Citizens on Independence Day



PUBLICATION

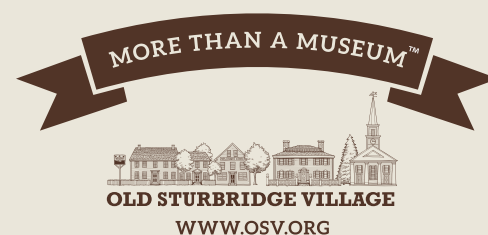
Cara Massey, *Editor*
Chris Tieri, *Chief Marketing Officer*
Shawn Vallee, *Creative Director*

The Old Sturbridge Village Annual Report
is published by Old Sturbridge Village.

Old Sturbridge Inc.
1 Old Sturbridge Village Road
Sturbridge, MA 01566



MISSION: Old Sturbridge Village, a museum and learning resource of New England life, invites each visitor to find meaning, pleasure, relevance, and inspiration through the exploration of history.



Jim Donahue
President
and CEO
Old Sturbridge
Village

Highly regarded in the nonprofit and education sectors as a collaborative visionary, Jim Donahue has led Old Sturbridge Village on a journey of transformation since taking over as President and CEO in 2007. Jim's commitment to innovation sets the tone for all Village initiatives and inspires our staff and generous community for which Jim is most grateful.

DEAR FRIENDS,

Thanks to our donors, members, volunteers and staff, Old Sturbridge Village took a giant step forward in 2019 to expand living history in New England - and we could not have done it without you.

With your support, we continued to draw hundreds of thousands of visitors to the museum throughout the year - culminating with a record-breaking *Christmas by Candlelight* in December. We continued to develop innovative programs for the museum audience, for our interns and fellows and for the students at Old Sturbridge Academy. And we expanded our New England footprint by launching an innovative partnership with the Coggeshall Farm Museum in nearby Rhode Island.

Our vision for bringing history to life for so many people in so many different ways **is only made possible** by your generous support and that of the hundreds of people listed in this report. Thank you.

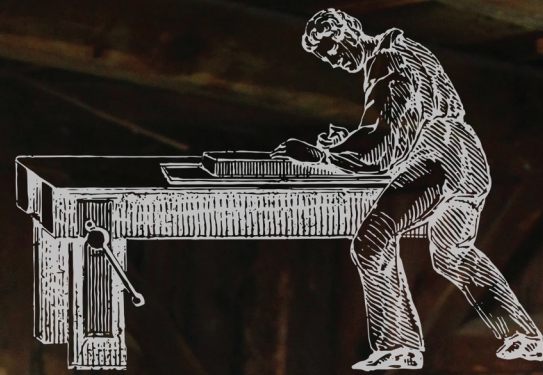
I never imagined I would be writing this letter in the midst of an historic pandemic. While the Village and our partner organizations are closed today to keep everyone safe, we await with confidence our reopening in the better days to come soon, and with anticipation and excitement for the many new ways that we will continue to bring history to life now, and in the years to come.

Thank you for your support in 2019 - and we look forward to returning to spend our 74th year of operation with you, our staff and our visitors - together - again soon.

Sincerely,

Jim Donahue
President and CEO





CABINETMAKING IN RURAL NEW ENGLAND

BIGGER THAN A BUILDING – OUR NEW CABINETMAKING SHOP

For the first time in almost 50 years, a new building is being added to the Village Common.

This year, Old Sturbridge Village will break ground on a new Cabinetmaking Shop on the Village Common. This groundbreaking kicks off an exciting new chapter in a multi-year effort to bring cabinetmaking and woodworking back to Old Sturbridge Village. While the most visible sign of this effort will be the shop, which is slated to open in 2021, it is about so much more than a building. It is about inspiring a passion for woodworking, preserving traditional skills for future generations, and exciting visitors about the role of cabinetmaking in early New England life.

Sturbridge and the region were home to some of the foremost rural cabinetmakers of the early 19th century, including Nathan Lumbard and Oliver Wight. These men, as well as others like them, were integral parts of the story of rural communities. To ignore their story and that of their craft is equivalent to ignoring the story of the blacksmith, the farmer, or the dressmaker. “Few people realize the amount of high-quality beautiful furniture produced in rural New England in the 1800s,” said Norm Abram, Old Sturbridge Village Trustee, and Master Carpenter for *This*

Old House. “My connection to the Village has been influenced by woodworking, and this exciting venture will carry on this educational tradition for today’s adults and children.”

The Village will employ both historic and modern building methods in the construction of the new Cabinetmaking Shop, which is patterned after period structures operated by early 19th-century New England craftsmen. The building will include a wood-burning stove, as did many free-standing shops of the period, and a small external woodshed.

Costumed interpreters will construct the shop during the days that the Village is open; Campus Operations staff will continue the work on days when it is closed. Many elements of the final Cabinetmaking Shop will be created by craftsmen and interpretive staff working in the Village, including reproduction period tools, doors, shelves, and the box stove. The large timbers for the construction of the shop were even cut by the Village Sawmill.

While the new shop is being constructed, an interim space is being used to interpret a rural woodworking shop of



Scale model of the proposed cabinetmaking shop, built by Bob Roemer, Trustee 2018.

the period. This interim venue, which opened in May 2018, includes an exhibit of furniture and joinery, information about the new Cabinetmaking Shop, and some basic woodworking tools. Through a grant from the Americana Foundation, master cabinetmaker Chris Nassise was hired to work in the interim shop during the 2018 and 2019 seasons.

“The story of cabinetmaking in rural New England deserves to be told,” said Brock Jobe, Old Sturbridge Village Trustee and Professor Emeritus of American Decorative Arts at the Winterthur Museum, Garden and Library. “And most importantly, the hundreds and thousands of visitors who come to Old Sturbridge Village every year deserve the opportunity to see, hear, and touch an activity that was central to life in America for centuries – the fine craft of woodworking.” 🐛



THANK YOU JANE AND DENNIS NESLUSAN for supporting the Cabinetmaking Shop

Jane and Dennis Neslusan

For Jane and Dennis Neslusan, Old Sturbridge Village is practically part of the family. Jane's parents, Muriel and Roger Schmidt went to the Village for their first date in 1948. At that time, what is now the Village Common was the entirety of the Village. Visitors paid \$1 per carload and could drive their car around the Common. Jane recalled her mother talking about visiting the Village with Roger in his shiny black Lincoln. Jane and Dennis both grew up in nearby Webster, Massachusetts and attended the same schools since fourth grade. They both visited Old Sturbridge Village themselves on a field trip, like so many local school children do. Because of her fond memories of her early courtship with Roger at the Village, Muriel often chaperoned those field trips.

As Jane and Dennis had their own children, they experienced the Village once again. They would bring their children to the Village on day trips and watch them explore and learn. Dennis had an appreciation for the men's crafts, such as the potter, blacksmith, and the shoemaker. Their son had an affinity for the bank. Their daughter participated in the summer experiences in costume; she now works in the

Los Angeles area as an actress and her parents see those early summers in costume at the Village as an opportunity that helped her grow and develop on her career track.

Jane and Dennis made a leadership gift to the Cabinetmaking Shop in honor of Jane's mother, Muriel C. Schmidt, and in memory of her father, Roger Schmidt. Roger's love of early American history and woodworking has been a constant presence in the family's lives. Roger and Muriel owned a farm, complete with horses, where Roger restored horse-drawn carriages. He was known to take wood from his own property, have it hewn at a local sawmill, and then employ modern and hand tool techniques in his own woodworking. Roger once harvested a cherry tree from the property on which Jane grew up and then created custom fireplace mantels for Jane and Dennis, Jane's sister, and he and Muriel to feature in their homes. Upon their retirement, Roger and Muriel bought a second home in southern Vermont on the Green River where Roger continued his love of restoring antique horse-drawn carriages. On that property, he built an updated version of Old Sturbridge Village's own Fitch House

employing historic techniques and modern engineering.

In 2019, Jane and Dennis were honored as Federalists of the Year for their support of the Village. Today, Jane is an Overseer at Old Sturbridge Village. The family business, Schmidt Equipment, founded by Jane's father, has been a corporate supporter of the Village since the 1980s. Jane and Dennis continue to find a deep connection to and appreciation for the Village, particularly as they reflect on the ways in which it has been present and meaningful to their family for so many generations. They hope that their story serves as a model for others



Fitch replica built by Roger Schmidt.

who have multigenerational stories surrounding the Village to show their appreciation for the role the Village has played in their lives through their philanthropic support in whatever way they are capable. 🐛



CHRISTMAS BY CANDLELIGHT SETS A NEW RECORD

More than 27,000 people visited Old Sturbridge Village this December for Christmas by Candlelight, a celebration of the season and New England Christmas traditions of the 19th century and today. This record-breaking attendance is a testament to the popularity of the program, which has quickly become a yearly tradition for many.

New to Christmas by Candlelight this year, visitors were invited to stroll the Christmas Tree Trail featuring 50 sparkling trees. Tucked away from the hustle and bustle of the Common, the trail welcomed wanderers in with a roaring bonfire, cocoa and cookies, and music. At the end of the trail, visitors found



the Wish Bridge this season, with more than 3,500 wishes made during opening weekend alone.

Also new to the event this year was a member cookie contest, encouraging Village members to submit recipes to be selected and showcased during a cookie sampling in the Parsonage. The winner of this first-time contest, held in November, was Debbie Dymek, a longtime OSV member who won for her “Yulelog” cookie recipe.

The event also included the annual, highly anticipated Gingerbread House Contest.

The 2019 winners were:
Adult Professional Winner: **Loren Standard**
Adult Non-Professional Winner: **Denelle Cooke**
Youth Winner: **Melody Berreth**
Family Winner: **Culross Family**

the Christmas Wish Bridge, where guests were invited to write their special wish for the holiday season. More than 14,000 wishes were made on

Visitors to the popular annual event enjoyed live music in the Center Meetinghouse, joined Victorian carolers, and listened to readings of classic stories.

Salem Towne House featured Christmas décor from the 1830s, 1850s, and 1870s, while the Parsonage decorations were inspired by Charles Dickens’ *A Christmas Carol*. The Friends Meeting House displayed a miniature nativity set, featuring over 500 individually carved and painted pieces. A nightly tree lighting ceremony, visits with Santa, sleigh and carriage rides around the Common, and demonstrations of holiday traditions like chestnut roasting rounded out the experience.

“Christmas absolutely is special here. This is what we do as a history museum and it’s great to look out and see all the smiles. And even when we have 20,000 people or more coming every year, when I’m doing my shows and I look up, I’m recognizing faces from years past. People have made us their tradition now, and that’s an incredible feeling.”

- Jim O’Brien, Director of Public Events and Performance

Christmas BY CANDLELIGHT MORE MAGIC & MORE MEMORIES



27,083

Visitors to Christmas by Candlelight

75

Christmas trees placed in the Mill area

14,000+

Wishes made on the Wish Bridge during Christmas by Candlelight

1,825

Feet of Western white pine garland hung on the Village common



3,474

Cups of cider sold

20,000

Thaumatrope (optical toy that was popular in the 19th century) photocopied, punched out, and tied



Rhys Simmons
Director of Interpretation



Sarah B. Parks, Coordinator
of Special Projects



Emily Dunnack
Director of Education



Caitlin Emery Avenia
Curatorial Director



Tom Kelleher, Historian and
Curator of Mechanical Arts

AN INNOVATIVE NEW VISION FOR INTERPRETATION AND EDUCATION

In 2018, Old Sturbridge Village received a \$75,000 grant from the National Endowment for the Humanities for Historic Places: Planning to develop a new Interpretation and Education Plan to mark the Village’s 75th anniversary in 2021. By August 2019, the Interpretation and Education departments had completed their planning and were preparing to submit a \$500,000 request to fund their new plan.

The Village’s Interpretation training and resource materials have not been comprehensively reviewed or significantly revised since the 1970s. Working with scholars, consultants, and partner institutions, OSV developed a new Interpretation and Education Plan that creates impactful visitor experiences, connects with a modern audience, and better reflects the diversity of our community, both past and present.

The multi-year plan, entitled *Foundations of Interpretation*, will allow the Village to update written interpretation guides; develop purposeful learning, emotional, and social targets for programs and exhibitions; expand training programs; and improve interpretation signage.

The proposal includes a three-year partnership with the International Coalition of Sites of Conscience to focus on training

in diversity, equity, accessibility, and inclusion work, as well as dialogue-based interpretation.

Written interpretation guides will be created for 37 spaces (households, horticulture, farms, trade shops, and civic/public buildings) in the Village. These guides form the basis of the Village’s interpretation work.

The Village will develop purposeful learning and social-emotional targets for the 50+ interpretation spaces and exhibitions to drive the historical content being delivered and reflect current educational thinking and practices. These targets recognize the need for museums to not only deliver content, but also facilitate dialogue, necessitating a shift in our interpretation goals beyond purely educational objectives.

The plan also includes the first phase of an improved signage

plan for the Village. The Curatorial team will create approximately 38 signs for structures and locations throughout the Village to provide more information about the building or location. We will also create crossroad

signs and campus maps to help visitors navigate the campus and replace existing deteriorated or out-of-date maps on campus. Old Sturbridge Village is committed to this new *Interpretation and Education*

Plan. We await a funding decision from the National Endowment for the Humanities in August 2020, and will seek alternate funding, if necessary, to ensure that the new plan is able to move forward.

Scholars and Partners



Margaret Bruchac, Associate Professor of Anthropology, Coordinator of Native American and Indigenous Studies, University of Pennsylvania (specializing in northeastern Native American histories, museum anthropology, material culture, and cultural performance)



Shannon Burke, Principal, Transformational Engagement (specializing in creating inclusive spaces and compelling narratives that connect the past to the present, inspire brave conversations, build community, and encourage empathy and civic engagement)



Christopher Clark, Department Head and Professor of History, University of Connecticut (specializing in the social history of economic life, the history of American capitalism, rural societies and industrialization, abolitionism, and utopian communities)



Linda Coombs, Program Director of the Aquinnah Cultural Center, Martha’s Vineyard (specializing in history, technology, and arts of Wampanoag culture; and colonial history from a Native American perspective)

Scholars and Partners, continued

Our thanks to the scholars and partners who have helped Old Sturbridge Village create this Interpretation and Education Plan for our future and have committed to helping us ensure the plan is successful.



International Coalition of Sites of Conscience
(With over 250 members in 65 countries, the Coalition builds the capacity of these vital institutions through grants, networking, training, transitional justice mechanisms, and advocacy.)



Lonnie Kaufman,
Founder and Principal Researcher, Evaluation for Action (specializing in applied research and program evaluation services to school systems, non-profit organizations, cultural institutions, and state agencies throughout New England)



Joanne Pope Melish, *Associate Professor Emerita, University of Kentucky (specializing in the history of slavery, emancipation, and the evolution of racial ideology in New England)*



Marla Miller, *Associate Chair, Director of the Public History Program, and Professor of History, University of Massachusetts, Amherst (specializing in U.S. women's work before industrialization, public history, and material culture)*



Emily Pawley, *Assistant Professor of History, Dickinson College (specializing in environmental history, history of capitalism, history of the body and health, landscape history, history of food and food production, and history of science)*



Cathy Stanton, *Senior Lecturer, Department of Anthropology, Tufts University (specializing in anthropology, farm history and heritage, foodways, public history, and museums)*



John Wood Sweet, *Associate Professor, Assistant Department Chair of History and Assistant Department Chair of Women's Studies, The University of North Carolina at Chapel Hill (specializing in Early American History from the colonial period through the early 19th century; daily life, culture and identity in the northeast; history of gender and sexuality before the Civil War)*

The NEH Planning Grant has launched an opportunity to examine our interpretation plan with an eye toward enhanced relevance with our expanding audiences. We bring history to life through highly-trained costumed historians across the many disciplines embedded in the Village experience. As we celebrate the success of our charter school and anticipate the excitement of our 75th Anniversary next year, the work outlined as part of this NEH-sponsored initiative will be transformational for the millions of visitors we will serve in the next decade.

*– Jim Donahue
President and CEO
Old Sturbridge Village*



A GROUNDBREAKING NEW PARTNERSHIP

This year, Old Sturbridge Village and the Coggeshall Farm Museum in Bristol, R.I. launched a transformational partnership, which went into effect on January 1, 2020, intended to sustain and expand living history in New England.

For nearly fifty years, Coggeshall Farm has been interpreting life on a salt-marsh tenant farm in the 1790s. "Like many nonprofits, it is a small organization employing a handful of staff to execute a myriad of responsibilities – from milking cows to plowing snow to writing grants to recording payroll. Organizations as small as Coggeshall often live very close to the edge of financial sustainability," said Jim Donahue, President and CEO at Old Sturbridge Village. In contrast, Old Sturbridge Village is a large museum that employs over 200 people in departments ranging from costumed interpretation and museum education to marketing and accounting. While Coggeshall sees ten thousand visitors annually, Old Sturbridge Village sees more than 260,000 in an average year.

Under the agreement, Old Sturbridge Village manages Coggeshall Farm Museum, handling all back-office functions like accounting, fundraising, marketing and human resources for a management fee that is

significantly less than what the Farm would have to pay to employ these functions individually. The Village has also put two full-time employees at the Farm year-round who are supervised and supported by Old Sturbridge Village staff. "They are working collaboratively to rebuild and revitalize the successful Interpretive and Educational programs for which the Farm is known and loved while also introducing new programs and experiences that have proven successful at Old Sturbridge Village," says Donahue.

This partnership provides a mutual benefit to the two museums, which are synergistic in both mission and organizational structure. In this partnership, Old Sturbridge Village will bring greater sustainability to Coggeshall Farm Museum and help better utilize financial resources. The Farm will benefit from the expertise of the professionals at Sturbridge, and members to both museums will benefit from admission reciprocity between the two museums. Jim Donahue will add the



role of Executive Director of Coggeshall to his duties.

Steve Lake, Coggeshall Farm Museum's Board President, tried to express the excitement of the Farm's board about this new partnership, saying, "We would like to thank Jim Donahue for his vision in forming this transformative partnership. CFM has long faced the challenge of sustainability shared by so many small nonprofits. This strategic alliance with OSV is a major step in securing Coggeshall's future."

But this partnership is about much more than the effective stewardship of financial



resources and organizational sustainability. It is about doubling down and investing in living history as a critical piece of our New England experience.

“When visitors come to Coggeshall Farm Museum and Old Sturbridge Village, we want them to find meaning and relevance in the stories of the lives of New Englanders who came before us,” says Donahue. “We want them to be inspired to learn a craft, to raise a garden, to farm, and to find out more about the people who lived in our community two centuries ago. We hope that our visitors become members - and that our members find

their inner historians, curators, farmers, and crafters through experiences at both of our museums.”

The first phase of the plan to revitalize the Farm centers around rebuilding the core elements of Coggeshall Farm Museum, including domestic craft, foodways, horticulture, and agriculture. Coggeshall’s farm program has always anchored the educational experience and, this year, completing the construction of the new Tyska Barn is an amazing opportunity to bring back life to the Farm. The barn will support heritage breed livestock, heirloom field crops,

and the rest of the agricultural program. Donahue says, “The essence of the Farm is what we’re focused on this year.”

Jim Donahue gave credit to the boards of both museums for having a vision for sustaining living history in the region through this partnership. “It’s a bold step – a great experiment – and I give a lot of credit to the Coggeshall board for thinking outside the box and prioritizing sustainability. Leveraging synergies between the two, getting more people involved in the living history of New England, it lifts both institutions.” 🐛

THANK YOU Supporters of Coggeshall Farm Museum and Old Sturbridge Village

The following individuals and foundations have made gifts to Coggeshall Farm Museum in support of its partnership with Old Sturbridge Village. Coggeshall Farm and the Village are grateful for the support of these donors as we work together to strengthen living history across the region.

TRUSTEES **Coggeshall Farm Museum**

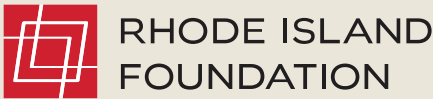
Steve Lake, *President*
 Andy Tyska, *Treasurer*
 Wendy Mackie, *Secretary*
 Coy Bethune
 Morgan Devlin
 Robert Martin
 Margaret Vendituoli Ferreira
 Jim Yess

DONORS **Coggeshall Farm Museum**

Lennart H. and Mary A. Aberg
 Barbara A. Allen
 Martha Antaya
 Mary Jane Bohlen
 The Carter Charitable
 Trust Funds
 Carl Becker and
 Katherine Castree
 E. Peter and Margaret M. Church
 Stephen H. and Kim N. Clark
 John and Kim Connors
 Sandra C. Darling
 Michelle Denault
 Walter H. and Joan S. Greene
 Myrna A. Griffith
 Barbara Hail

Robert S. Hamel
 Hibbitt Family Fund
 Garry and Catharine Holmstrom
 Kevin Jordan
 James V. Kearney
 Stephen M. and Lauren M. Lake
 Pamela F. Lenehan
 Stewart and Adrienne C. Martin
 Clifford W. and Maria V. Morey
 Bernard Oakley
 Mark Palmer
 M. Jean and Richard Pearce
 Dale F. and Patricia Radka
 Rhode Island Foundation
 Andrea L. Rounds
 Nancy J. Szenher
 Dyan and John B. Vaughan
 Emese Wood
 Sandra S. Wyatt





THANK YOU RHODE ISLAND FOUNDATION

Rhode Island Foundation, the largest funder of nonprofit organizations in Rhode Island, provided a \$50,000 grant to Coggeshall Farm Museum in support of its strategic alliance with Old Sturbridge Village. The one-time grant supports the salary of a Farm Coordinator through the Foundation’s Responsive Grant Program. “Coggeshall Farm Museum is a resource to the state. It’s been a resource since the ‘70s. We thought leveraging the expertise from the Village to increase the capacity, the attendance, the use, the long-term sustainability, had a lot of potential,” said Ricky Bogert,

Grant Programs Officer. Responsive Grants at Rhode Island Foundation are awarded to respond to the expressed needs of the community across the nonprofit sector. “We look at proposals that show the promise to be impactful for the state,” said Ricky Bogert. “This particular grant was fairly unusual. We generally are hesitant to provide funding to hire staff, but we saw it as much more. It really was an investment in this partnership.” Last year alone, the Rhode Island Foundation made more than 2,000 grants totaling \$56 million. Ricky noted that the Foundation sees requests from

many organizations like Coggeshall Farm: small nonprofits run by a dedicated and passionate staff who are stretched thin. With that in mind, the Foundation sees their funding of Coggeshall Farm as much more than a one-time grant. “It’s an investment in growing the partnership between the two organizations, and an experiment in building the capacity of small nonprofits that could be replicated across Rhode Island.” He added, “We’re confident in the expertise of both organizations that it can be successful.”



Photo: Explore Bristol, Rhode Island



THANK YOU HIBBITT FAMILY FUND

The Hibbitt family moved to Bristol, Rhode Island thirty years ago in search of a home near the water. At the time, they knew nothing about the richness of the Bristol community and had never heard of Coggeshall Farm. The family had originally moved to Rhode Island to allow David to pursue his PhD at Brown University and had only visited Bristol for its famed 4th of July Parade, something, Susan quipped, every Rhode Islander must do at least once. It was not long after they took up residence in Bristol, however, that Susan joined the Board of Coggeshall Farm Museum as Treasurer, a position she held for nearly a decade. “As our grandchildren came along, we visited the Farm,” she said,

“and it’s been a neighbor all these years.” As Treasurer of the Board, Susan had intimate knowledge of Coggeshall’s struggle to survive as a small nonprofit. “The Farm’s sustainability was always hanging in the balance,” Susan recalled. That is exactly why Susan and her family have decided to support the Farm’s partnership with Old Sturbridge Village through their donor advised fund, the Hibbitt Family Fund. “Now the Farm has the possibility of stability and a path forward to become a real asset to the community. A strong institution like Sturbridge being involved is very important.”

Karen Hibbitt, who has a

Top photo, from left to right: Samantha Rockwell, Karen Hibbitt, Susan Hibbitt (back), Sophie Rockwell (front), Cate Hibbitt, David Hibbit

master’s degree in Museum Studies from George Washington University, now works at the National Archives. With Karen’s strong ties to the work of museums, the family’s personal connection to Coggeshall Farm, and their commitment to investing where they live, the family decided this was a project they were excited to fund. “Our daughters are full partners in our investment decisions,” Susan said. “Hopefully our granddaughters will come aboard, too.”



OLD STURBRIDGE VILLAGE 21st Century • Learning Program

19TH-CENTURY MUSEUM BECOMES 21ST CENTURY COMMUNITY LEARNING CENTER

Old Sturbridge Village was the only museum in Massachusetts to be awarded a highly competitive 21st Century Community Learning Centers (21stCCLC) Grant through the Massachusetts Department of Elementary and Secondary Education. This federal grant provides Old Sturbridge Village with \$175,000 each year for three years to create an extended day program that meets the needs of Old Sturbridge Academy students.

The Massachusetts Department of Education defines a 21st Century Community Learning Center as a program that “provides academic enrichment opportunities during non-school hours for children... The program helps students meet state and local student standards in core academic subjects, such as reading and math; offers students a broad array of enrichment activities that can complement their regular academic programs; and offers literacy and other educational services to the families of participating children.”

Old Sturbridge Academy (OSA) is a school-wide Title I School. Students arrive at OSA with very different backgrounds, many social emotional needs, and varying levels of school readiness. The 21stCCLC program at Old Sturbridge Village was devised to address these areas and to replace the

previous afterschool program in order to align with the Village and Academy’s shared commitment to quality.

The 21stCCLC program brings the OSA mission statement’s EL Education elements to the afterschool program: more time with hands-on, project-based learning with real-world applications, and a commitment to imagination, exploration, immersion, community, and quality work. The program also utilizes the Village and other partner resources. Families at OSA had expressed a desire for an affordable afterschool program that provided a safe environment with structured activities and a consistent homework component.

Old Sturbridge Village’s Museum Education staff worked with Old Sturbridge Academy to devise the new afterschool program, which



launched in October 2019. Students enroll for a minimum of two days each week, allowing for 100 hours of program time each year. Any child who qualifies for free or reduced-price lunch is enrolled in the program free of charge. Third, fourth, and fifth grade students enroll in a club which meets for 1 ½ hours, followed by a 30-minute homework club. Younger students enjoy shorter club sessions.

Students enrolled in the program choose from clubs such as Young Artists, Engineering, Woodworking, Pottery, Model Rocket Club, Young Chefs, Cartography, and Nature Club.



44%

of OSA students are high needs.

51%

of OSA students are interested in robotics.

55%

of OSA students want to learn more about science.

Photo: Dave Hruska, Coordinator of Agriculture, leads the Model Rocket Club during the 21stCCLC afterschool program

Jocelyn Bolduc, Extended Day Program Coordinator, said, "Each week the clubs are building upon what they learned before and working on a long-term project, so they

have a finished project at the end. For example, Cartography Club learned about compasses, the different parts of maps, topography, and the process of map making. Then they made their own large continent maps. Each student made their own. They painted and put mountains and forests and deserts; they did the compass rose and a map key and labeled everything. They did the research for their maps and then put it all together. Each club opens up a world to them."

At the end of each semester, the students put on a showcase to display their final projects and show off all that they have learned to their friends, parents, and teachers.

We are grateful to our partners for their help in creating our 21st Century Community Learning Center, especially Madeline Smola, our 21stCCLC mentor, and the Quaboag Regional School District. 🦋

THANK YOU MADELINE AND TODD SMOLA

for supporting the 21st Century Community Learning Center

Madeline Smola and her husband, Rep. Todd Smola of the 1st Hampden District, have long been supporters of Old Sturbridge Village. "Todd has known Jim [Donahue, Old Sturbridge Village President and CEO] since he became the CEO and has supported the Village legislatively for many years," she said. "When we got married, I joined him at the Village for special events. I fell in love with the Village. It reminded me of my days in college at Harvard, being around the historical buildings. I always felt comfortable at the Village. I was happy there and I wanted to do more."

For Madeline, a Village Overseer and the After-School and Out-of-School Time Coordinator for Quaboag Regional School District, "doing more" took the form of helping design the Village's new 21st Century Community Learning Center (21stCCLC) and securing the federal funding for the first three years of this new afterschool program. "Jim Donahue and Emily Dunnack [Director of Museum Education] asked me to come in to talk about afterschool programming. We talked about what a high-quality program looked like, that it usually includes project-based learning and that it always has an educational component." The following year, when Madeline saw the federal grant application

for 21stCCLC through the Massachusetts Department of Elementary and Secondary Education she jumped at the chance to help the Village transform its afterschool programming. "I looked at the Academy's numbers and realized they were eligible for the grant. It was late in the process, so I contacted them and told them that if they were interested, I could help them write the grant."

Quaboag Regional School District has been designated a Promising Exemplary 21stCCLC site. "One of our duties," Madeline explained, "is that we mentor other sites, schools, or community-based organizations interested in having a 21st Century program. I knew that within my role, I would be able to mentor and help the Academy. I told them who they had to speak to, where to get the information they needed. I worked with Jocelyn Bolduc [Extended Day Program Coordinator] to conduct an analysis of the afterschool program they currently had and how using 21stCCLC funding would change the program and bring it up to 21stCCLC standards."

Madeline's guidance was instrumental to the Village's ability to receive the competitive federal funding for the 21st Century Community



Madeline Smola and her husband, Representative Todd Smola

Learning Center, and she has remained a crucial mentor for the afterschool program.

Her passion for the Village and the Academy is evident. "Close your eyes and picture students being on that [Old Sturbridge Village] campus, being able to go out into the Village on Expeditionary Learning days," she said. "Who wouldn't love to go to school in that environment? It's such an exciting concept for a school."

A native of the small town of Granby, MA, Madeline remembers her first trip to the Village: "We went on a field trip once to the Village and I still remember it to this day. I was excited to bring change to buy rock candy," she laughed. "For a lot of people, that's going to be their only experience – going once, barely able to take in the whole Village in a day on a school field trip. But think about having that excitement every day. I'm particularly excited about the idea of the school expanding into middle school and older students being around that. They're going to be able to give back in a way the younger kids can't. It's going to be a part of their personal mission, I believe." 🦋

NATIONAL PRESIDENT VISITS BETTER WORLD DAY

Scott Hartl, President and CEO of EL Education, joins our global celebration

Students at Old Sturbridge Academy participated in the second annual “Better World Day” on May 3. Contributing to a better world is the norm at Old Sturbridge Academy and at more than 160 EL Education schools across the country, where academics are joined to character and service. Each year on the first Friday in May, EL Education schools across the country celebrate Better World Day to shine a light on learning that contributes to a better world. One of the national themes for Better World Day 2020 was Environmental Stewardship; Old Sturbridge Academy’s project in this theme was highlighted by the national organization.

This year, Old Sturbridge Academy was honored to host Scott Hartl, President and CEO of EL Education, as part of our celebration. “We were hand selected by Scott as his first-round draft pick,” said Lisa DeTora, Principal of Old Sturbridge Academy. “It was such an honor for us to be chosen because we are such a new school.” Old Sturbridge Academy was chosen, in part, because of its innovative partnership with Old Sturbridge Village. “The kids are expanding their audience beyond the classroom,” Lisa said. “[This project] really exemplifies what our community can do. It’s young, but powerful. That scope is so much bigger than I ever could have imagined, so much so that we’re receiving national attention.”

Scott Hartl, President and CEO of EL Education, said, “Now more than ever, doing work that matters is important for students, their communities, and the nation. The Better World Project

joins character and scholarship, spotlighting the work of students who are taking ownership of their learning and building bridges of understanding across differences.”

Old Sturbridge Academy students started their celebration of the second annual Better World Day with a procession, grouped by their hometowns, ending in a morning ceremony on the Old Sturbridge Village common. Students led the opening ceremony with song and poetry.

Following the morning ceremony, Academy students fanned out to different locations in the Village where they prepared a field for a fall planting of American Chestnut trees, worked on a pollinator garden managed by the students, and built bat boxes to provide shelter for those creatures. After their day at the Village, students planted Yellow Birch trees on the town commons of each of the 13

communities that the school serves to honor the care and keeping of our common spaces.

The guiding question for the students this year was, “What do we have in common?” Lisa DeTora remarked on the multiple layers of meaning within the question. Not only were activities within the Village centered around the Village Common, but the theme of interconnectedness was emphasized throughout the day. “Scott remarked on the feeling of crew, the culture that we are building. He saw how the Village staff interacted with the Academy staff and we’re one big crew. He gave a speech about how important it is for us to be doing this work because all across the country other schools were doing the same type of work; we’re unique, but we’re also part of this national network.”

This theme of common ground and connectedness was echoed by the tree plantings at the

end of the day. “The Parent-Teacher-Scholar Association organized the tree plantings on the town commons in the sending districts,” Lisa said. “They had ceremonies and it was symbolic, planting trees in these very public spaces to show we’re all connected.”

“The students of Old Sturbridge Academy are infused with the desire to improve their communities, because self-improvement is at the core of their learning experience. Better World Day is their chance to share and implement what they’ve learned with the broader community,” said Jim Donahue. 🐝

What is EL Education?

Founded in the tradition of Outward Bound, EL Education enhances instructional practices and instills a positive school by emphasizing a rigorous and engaging curriculum; an active, inquiry-based pedagogy; and a school culture that fosters compassion and collaboration. Learning Expeditions are the basis of EL Education’s instructional model that features an 8-10 week multidisciplinary project that provides for deep, meaningful learning, and a multi-faceted experience that connects students to real-world issues and encourages critical thinking and problem solving. EL Education enables Old Sturbridge Academy and Old Sturbridge Village a pathway to fulfill our commitments of community, high-quality work, and real-world applications of learning, imagination, exploration, and immersion.



INAUGURAL JOAN M. McGRATH Memorial Dinner and Lecture

The inaugural Joan M. McGrath Memorial Dinner and Lecture featuring best-selling author and historian David McCullough as the speaker was held on October 24, 2019 at Old Sturbridge Village. Joan was a loyal and passionate supporter of the Village and our mission of interpretation, collections, education, and preservation. Her leadership launched a number of initiatives at the Village, including the Village's Distinguished Speaker Series.



Joan always wanted to convince David McCullough to visit Old Sturbridge Village. She passed away unexpectedly in 2018, but we were able to honor her dream and her memory with this event. There were 210 guests in attendance and

the event raised more than \$60,000 to support the Village. The Joan M. McGrath Memorial Dinner and Lecture was a wonderful illustration of the great love that our community has for Joan.

Left photo: Joan and Richard McGrath



Top photo: David McCullough. Left photo: Bill McCullough, Richard McGrath, David McCullough and Jim Donahue. Right photo: The McGrath Family with David McCullough.

A longtime Chairman of the Overseers and member of the Village Board of Trustees, Joan was instrumental in facilitating Old Sturbridge Village's partnership with the Historical Society for Early American Decoration. She chaired the Gala and encouraged Sturbridge residents to become members of the Village to support its future in the town. She and her husband, Rich, also supported

the Village through the family business, McGrath Insurance.

"I have the privilege of working with a lot of terrific people at the Village. Joan was one of the best," said Old Sturbridge Village President and CEO Jim Donahue. "Joan's enthusiasm for the Village, the community, her family, and friends is deeply missed by all of us." 🐛



PRESIDENT’S AWARD: MIGUEL GÓMEZ-IBÁÑEZ

Miguel Gómez-Ibáñez, President Emeritus of North Bennet Street School, was honored on June 20, 2019 with the Old Sturbridge Village President’s Award at a reception at the Union Club of Boston. The Old Sturbridge Village President’s Award honors those individuals whose work, like that of Old Sturbridge Village, brings meaning, relevance and inspiration to the public through the exploration of New England life and history, and whose scholarship has had a significant impact on the museum field.

Miguel Gómez-Ibáñez was the first graduate of the North Bennet Street School to serve as President. He combined a first career practicing architecture with his North Bennet Street School training as a cabinet maker to become a nationally recognized designer and maker of studio furniture. Throughout his career, Miguel has been a champion of education and fine craft. During his tenure as President, North Bennet Street School established partnerships with numerous cultural and educational institutions in the Boston area and expanded the school’s full time and continuing education programs.

We welcomed 50 guests to Boston’s Union Club to honor Miguel’s career. Gifts made in his honor supported our Cabinetmaking Shop campaign. 🦋



Top photo: Miguel Gómez-Ibáñez and Jim Donahue. Bottom left photo: Margaret Pierce, OSV Board Chair. Right photo: Brock Jobe, OSV Trustee and former President’s Award winner.

THANK YOU CORNERSTONE BANK

for being a dedicated business partner



Cornerstone Bank and its foundational banks, SpencerBANK and Southbridge Savings Bank, have been corporate partners of Old Sturbridge Village for many years. Based in Worcester, Massachusetts, Cornerstone Bank operates a local branch in Sturbridge along with 12 additional branch locations throughout Central Massachusetts. It is a local, community bank that has placed relationships at the center of its operations, including a deep commitment to supporting causes that improve the quality of life for the residents of Central Massachusetts and Northern Connecticut.

Cornerstone Bank President & Treasurer Todd M. Tallman explained, “Everybody here really just wants to give back and be part of something bigger than themselves, whether it’s through volunteering or financially giving back; it’s pretty fulfilling. The ability to give back to people and volunteer your time, that’s powerful. There isn’t anybody here that doesn’t feel that way. Overall, the top priority

for the Bank is community.” Cornerstone strives to prioritize charitable contributions to the local community, especially those that improve financial literacy, or assist children and individuals in need. “Old Sturbridge Village checks a lot of those boxes for us,” stated Todd.

Todd also serves as an Old Sturbridge Village Overseer. “I was very fortunate that the Executive Management Team [of the Bank] was always very supportive professionally and personally of the Village, so they instilled that in me, too. It’s been great to watch the organization grow under Jim [Donahue, President and CEO]’s leadership. You can’t go anywhere that is more relaxing than the Village because the pace is very different; that part I love the most, and I’m pleased to see so much of what’s been done to move things forward. Now when you go to the Village, there’s so much happening and I always get enjoyment from visiting personally.”

In 2019, Cornerstone Bank sponsored Old Sturbridge Village’s Trick or Treat event,



Cornerstone mascot Moola at Old Sturbridge Village

stepping in when another sponsor had to bow out. Their \$2,500 donation ensured that the family-friendly evening program continued as planned. The Bank’s Sturbridge branch also sent a team of volunteers to help distribute candy, which included their corporate mascot, Moola.

“The Village is an institution that provides hands-on learning that you can’t get anywhere else,” Todd said. “From our [Cornerstone Bank’s] perspective, it’s a great philanthropic opportunity. I consider the Bank to be a very good neighbor within the community. It’s something we pride ourselves on, and the Village has always been aligned with that. It has always made sense to partner with the Village and it’s great to see another local institution thrive. Being a small part of that is all the better; it’s what we’re trying to do every day. Partnering with the Village is a chance to be a part of the educational experience for everyone who walks through those doors. That is important to us.” 🦋

12TH ANNUAL GALA — AUTUMN IN THE VILLAGE

Held on September 14, 2019 Old Sturbridge Village’s 12th Annual Gala, Autumn in the Village, was held at the Oliver Wight Tavern and featured music by guitarist Dan Feeley and Four Guys in Tuxes. The Gala also included the debut of the 9th annual, limited-edition Vaillancourt Santa. Owned and operated by Overseer Gary Vaillancourt and his wife, Judy, Sutton-based Vaillancourt Folk Art crafts these hand-painted heirloom pieces using antique European molds. This year’s Santa is holding a pumpkin in one hand and lantern to light his way in the other, with magnificent images from OSV incorporated into his robe. Our one-of-a-kind 2019 Autumn in the Village Santa truly captures the color and beauty of New England’s beloved fall season.



Gala committee from left: Michael Villano, Paula Bowne, Kathy Harrington, Christina Predella, Rick Predella, Jennifer Bailey, Sandy LeMieux, Charlie Peters, Beckie Galonek. Missing from photo: Ann Marie Argitis, Sandy Carroll, Kathy and Ron Vairo.

This year’s 1946 Circle Honorees were the Predella Family. Rick and Peg Predella have lived in Sturbridge for the last 32 years. A Village Overseer, Gala Co-Chair, and volunteer interpreter on the Freeman Farm, Rick grew up in the Quincy/Braintree area where he came to find his love for American history. Members of the Village’s 1946 Circle and Federalist Society, Rick and Peg are fervent community

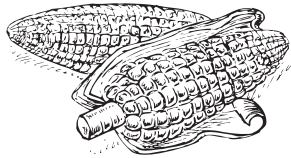
volunteers, having been active in youth baseball, softball, and soccer and the Hope for Holly awareness campaign for young adult meningitis. Christina Predella, a Village Overseer and Gala Co-Chair, and Christopher “Babe” Predella live in Brimfield with their young family. As members of the 1946 Circle and the Federalist Society, Christina and Babe have been passionate, generous, enthusiastic

supporters of Old Sturbridge Village since they first attended the Gala some seven years ago. The Gala Committee, aided by our generous Trustees and Overseers, put on an enjoyable and financially successful Gala, attended by more than 150 guests and raising over \$140,000 to support the Village. 🦋





Hands-on crafts and trades classes



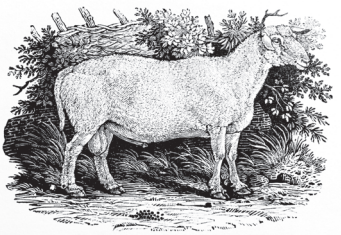
Cultivation of heirloom plants



Training of interpretive staff



Acquiring new items for our collections



Care of our animals

WHERE YOUR GIFT GOES



Gardens (kitchen, ornamental, herb)



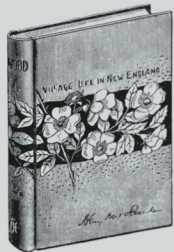
Youth education programs (homeschool, Scouts, 21st Century Community Learning Center, etc.)



Internship programs for high school and college students



Supplies for horticulture and agriculture programs



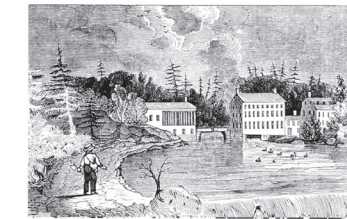
Care of our collections (mold remediation, proper housing and cataloging, etc.)



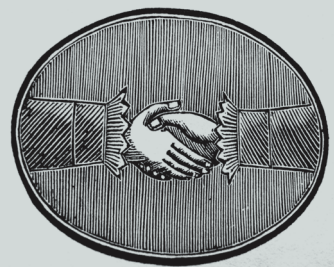
Curating new exhibits



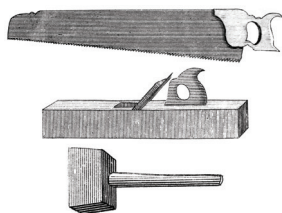
Maintenance of the grounds (salting in the winter, removing dead trees, etc.)



Preservation of our historic buildings (repairing roofs, painting and protecting buildings from the elements, etc.)



Blue Star Museum and NARM



Tools and supplies for the trades (blacksmith, tinsmith, cooper, potter, printer, etc.)



FINANCIAL SUMMARY

Operating Support and Revenue:	2020 Unaudited	2019 Audited
Admissions	\$1,846,706	\$1,843,879
Memberships	\$526,730	\$560,508
Lodge Revenue	\$738,203	\$735,762
Food Service	\$2,219,133	\$2,487,817
Rents and Commissions	\$804,632	\$817,011
Special Events Programs	\$1,342,329	\$1,296,040
Contracted Services	\$270,751	\$217,841
Gifts, Grants, and Bequests	\$2,836,112	\$2,931,130
Appropriation for Spending	\$400,000	\$575,000
Other	\$78,669	\$41,317
Total Operating Support and Revenue:	\$11,063,266	\$11,506,305
Operating Expenses:	2020 Unaudited	2019 Audited
Education and Public Programs	\$4,054,818	\$3,762,582
Research, Curatorial, and Library	\$1,336,606	\$1,214,505
General and Administrative	\$1,598,835	\$1,569,925
External Affairs	\$1,028,987	\$1,000,918
Merchandising	\$167,066	\$155,859
Food Service	\$2,638,222	\$2,890,649
Lodges Expenses	\$835,282	\$891,652
Total Operating Expenses:	\$11,659,816	\$11,486,090
Non-Operating Revenue and Expenses:	2020 Unaudited	2019 Audited
Investment Income (loss), net	\$1,240,578	(\$254,384)
Contributions – Endowment	\$10,000	\$157,312
Contributions – Capital	\$168,800	-
Change in Value of Split-Interest Agreements	\$121,789	(\$154,692)
Appropriation for Spending	(\$400,000)	(\$575,000)
Total Non-Operating Revenue (Expenses)	\$1,141,167	(\$826,764)
Changes in Net Assets	\$544,617	(\$806,549)
Total Current Assets	\$869,426	\$938,595
Investments	\$9,289,580	\$8,444,494
Assets Held in Trust	\$3,109,073	\$2,894,315
Property and Equipment, net	\$6,023,759	\$5,979,352
Total Assets	\$19,291,838	\$18,256,756
Total Current Liabilities	\$3,303,734	\$2,808,235
Long-term Debt, net of current portion	\$6,128,306	\$6,217,416
Split-Interest Agreement Liabilities	\$2,797,362	\$2,713,286
Total Liabilities	\$12,229,402	\$11,738,937
Total Liabilities and Net Assets	\$19,291,838	\$18,256,756

GEORGE WASHINGTON WELLS SOCIETY

Preserve the Past. Support the Future.

The George Washington Wells family established Old Sturbridge Village, one of the largest outdoor living history museums in the country. George's sons bequeathed to the Village their vast collections of artifacts of material culture from early 19th-century New England. These became the foundation for educational programs and year-round exhibits that tell the story of everyday life in a small New England town during the years 1790 – 1830.

Today, the George Washington Wells Society recognizes those individuals who name Old Sturbridge Village as a beneficiary in their estate plans. Friends who inform us of their intention to support Old Sturbridge Village with a bequest or planned gift demonstrate their understanding of the importance of leaving a legacy to preserve history.

A bequest in your will or trust to Old Sturbridge Village may consist of a percentage of your estate, a fixed dollar amount, or specific property. You may name OSV as a beneficiary of your retirement plan or IRA, entitling your estate to a charitable tax deduction, or have all or part of your life insurance proceeds paid to OSV. The Village is appreciative of bequests of any size, which together help ensure that our mission continues to serve future generations. We are grateful for the members of the George Washington Wells Society who have left a legacy through Old Sturbridge Village.

Anonymous	Ralph C. Bloom	Maurice L. Clemence
Norman L. Abram	George F. Booth II	Eva C. Cline (†)
Margaret Ahlback (†)	Constance M. Boyle	G. Allan Dash
Richard A. Altman	Michael D. and	Georgia P. Dash
George B. Arnold Jr. (†)	Mary Ann Brockelman	Donna DeCorleto
Philip C. and Elaine W. Beals (†)	Marjorie V. Butcher (†)	Nancy E. Dempze and
Nancy B. Beatty	Kathleen A. Cassel (†)	Dan Bailey
LuAnn V. and Ronald L. Benoit	M. Lou Cataldo (†)	Dorothy B. Derick
Nancy D. Berliner	Dorothy K. Clemence (†)	J. Edward and Thora F. Dumont
Lydia Blacker	Gwendolyn M. Clemence (†)	

Key
(†) Deceased
(•) Monthly Donor
(*) Member

Every effort has been made to ensure the accuracy of these lists. We apologize for any omissions or errors.

Shirley L. and Bradford F. Dunbar (†)	David R. Maack	Allan V. Scura
Catherine M. Fennelly (†)	Dudley R. Marsh (†)	Miss. Harriet N. Smith (†)
Joan Ferguson (†)	Mrs. Frances V. Marshall (†)	Mr. William L. Smith (†)
Marilyn Forke	Alfred L. McKee Jr.	Thurston Twigg-Smith
Nancy M. Hanslip	Ray A. Medley (†)	C. Malcolm Watkins (†)
Richard B. Hardy	Beatrice A. Miller	Joan P. Watkins (†)
Sarah C. Hardy (†)	Patricia Miller	Mary Alice Waugh
Sandy Hennig and	Nancy Norcross (†)	L. Dana Wells (†) and Gina Wells
Jason Hennig	Pliny Norcross (†)	Linda M. Wilder-Curtis
Adelaide E. Jansen (†)	Jane C. and Richard Nylander	Barbara H. Wuth
Marianne J. Jeppson (†)	Elisabeth Peden (†)	Mr. Herbert M. Wuth (†)
Barbara P. Krashes	Charles A. Peters	
David Krashes	Paul S. and Anne T. Rapo	Bequests Received in
Lucille A. Langlois	Arline W. Rayner (†)	Fiscal Year 2020
Crawford and Ann G. Lincoln	Gay Reddig Mayl	
Jackie Littlefield	C. Sumner Roberts	Margaret S. Ahlback
Mr. and Mrs.	Dorothy S. Roberts (†)	Catherine M. Fennelly
Paul Damon Littlefield (†)	Robert W. Reeder III	John and Marianne J. Jeppson
Elizabeth S. Luther (†)	Hannah and	
Jane C. Lyman (†)	Robert Saltonstall (†)	
James B. Lyon	Ann Sargent	
	Richard G. Schulze	

THE POWER OF THE ENDOWMENT

The Old Sturbridge Village Endowment has an enduring impact on the Village and provides an essential source of support for the museum, long after the initial gifts are made. This type of stable, consistent revenue helps insulate the museum from attendance and other earned revenue fluctuations, as well as enables us to do a variety of things such as implement new programs, increase compensation, and address capital needs for restoration and preservation. Gifts to the Endowment provide for the museum's future and leave a legacy that will ensure the continuation of our mission.



THANK YOU EDWARD W. BETTKE for your committment to our future.

THANK YOU GEORGE F. BOOTH II AND PENNY DEWAR-BOOTH

George F. Booth II and Penny Dewar- Booth describe their relationship with Old Sturbridge Village as a “love affair.” A long-time Village Trustee, Geof said, “I grew up in Worcester and was introduced to the Village on family day trips and school outings in the 1950’s. It was part of my life and I loved it.”

After college, with a major in history, and four years in the Navy, Geof pursued a career in the magazine business in New York City. In the 1980’s he bought a small cottage on a lake in North Brookfield, Massachusetts and would have friends come up from New York for the weekend. “I’d take them to the Village and became enamored with the place once again. I realized how significant and important an institution it had become. I wanted to become part of it and became an Overseer, Trustee and ultimately Chairman of the Board. Importantly, I chaired OSV’s first Capital Campaign in the 1990’s that proved to be a great success.”

Penny came to know Old Sturbridge Village through her husband. A former marketing executive in the hospitality industry and a native of Canada,

Penny began visiting the Village with Geof. “I fell in love with it myself,” she said. “The first time Geof took me was in the winter and I was intrigued with the costumed lawyer. I thought it was such a wonderful experience to hear him talk about what the law was all about during the 1830’s.”

When asked why they have made Old Sturbridge Village a philanthropic priority, Geof responded immediately, “It’s important. It’s a stimulating environment to be a part of, but it’s also important to continue the historical interpretation for young people who might not get the basics of our history at school. It’s vital that the Village exist, along with other living history museums... Old Sturbridge Village is in my estate plans and I feel a commitment to give significantly on an annual basis.”



George F. Booth II and Penny Dewar-Booth

“I come from an old New England family,” Geof said. “My five-times grandfather fought at Bunker Hill. My great-grandfather was a Civil War veteran who was born in the late 1830s. It [the Village] is a representation of our personal family history, too. In a way, it’s part of me.”

CORNERSTONE CIRCLE

The Old Sturbridge Village Cornerstone Circle recognizes those individuals those gave \$2,500 or more this year.

The word “cornerstone” indicates the first set of stones in a masonry foundation. All other stones are set in reference to this stone, determining the stability and position of the structure to come. Our Cornerstone Circle recognizes donors whose generosity has a profound impact on our mission.

Cornerstone Circle donors receive a complimentary membership and are invited to the annual Federalist Dinner.

Visionaries

(\$25,000 and greater)

- Anonymous
- George F. Booth II and Penny Booth (*)
- David and Vicki Croll (*)
- Richard B. and Sarah C. (†) Hardy (*)
- Keith and Elaine Knowlton (•) (*)
- Marilyn K. Kucharski (*)
- Lisa W. Markham (*)
- Bill and Judy McClurg (*)
- Richard A. McGrath (*)
- Dennis and Jane Neslusan (*)
- Robert W. Reeder III and Lorraine Reeder (*)
- Allan V. Scura (*)
- Edward A. and Diane Straker (*)
- Helen A. Titus (*)
- Susan S. and Robert A. Vincent (*)

Presidents Circle

(\$10,000 - \$24,999)

- Anonymous
- Norman L. Abram (•) (*)
- Theodore and Barbara Alfond (*)
- John J. Argitis (*)

Kathryn A. and Theodore R. Ashton (*)

- Michael D. and Mary Ann Brockelman (*)
- Kathleen and Philip Cambo (*)
- Jack and Judy Currie (*)
- James Dutton (*)
- Estate of Catherine M. Fennelly
- Karen L. Howat (*)
- Estate of John and Marianne J. Jeppson (*)
- Frances W. Magee (*)
- Jack and Gay Mayl (*)
- The McDevitt Family (*)
- Bishop J. and Linda L. Nawrot (*)
- Jane C. and Richard Nylander (*)
- Elizabeth H. and Alan S. Peppel (*)
- Margaret H. and Jeffrey H. Pierce (*)
- Richard G. Schulze (*)
- Michael and Stephanie Villano (•) (*)
- Alexander J. Wall III and Kathleen R. Wall (*)
- Joan Pearson Watkins Revocable Trust (†)

Stewards

(\$5,000 - \$9,999)

- Anonymous
- Joseph Clark (*)
- Ralph T. Clarke (*)
- Dorothy C. Fullam (*)
- James and Patricia Goode (*)
- David and Barbara P. Krashes (*)
- Forbes and Sara Maner (*)
- Cynthia B. and David Michener (•) (*)
- Paul S. and Anne T. Rapo (*)
- Bob Shabot and Christine Psathas (*)
- Jon J. Skillman and Luanne Selk (*)

Historians

(\$2,500 - \$4,999)

- Anonymous
- Dave and Lorraine Badrick (*)
- Edward W. Bettke (*)
- Connie and Jim Boyle (*)
- Barry M. Burriesci (*)
- Desiree Caldwell Armitage and William Armitage (*)
- David and Vickie Cheney (*)

Key

- (†) Deceased
- (•) Monthly Donor
- (*) Member

Every effort has been made to ensure the accuracy of these lists. We apologize for any omissions or errors.

Cornerstone Circle Continued

Susan B. and Donald Collins (*)
James Cottrell and
Harriet Otis (*)
Mary A. Dresdow (*)
James G. and
Elizabeth F. Fisher (*)
Martha D. Hamilton (*)
Don and Ann Hare (*)
Martha E. Hurtig (*)
Irma and Talbert E. Lauter (*)

Christine Lee (*)
James and Linda McLaughlin (*)
Beatrice A. Miller (*)
Charles R. and
Meredith L. Nyberg (*)
Terence and Mary O'Coin (*)
Charles A. Peters (*)
Anthony C. and Sally Pini (*)
Christopher and
Christina Predella (*)

Frederick J. and
Bonnie M. Rich (*)
Lee H. and Cecilia Sandwen (*)
Karen and Joe Spiewak (*)
Martha N. Sullivan (*)
John and Nancy Whiton (*)
Dr. and Mrs. Richard Zimon (*)

Kathleen H. and
Paul D. Harrington (*)
Rebecca M. Harvey (*)
Reed and Therese Hillman (*)
Beth F. Houston (*)
Stephen Kaloyanides Jr. (*)
Alison C. Kenary (*)
Patricia B. Kiley (*)
Dennis R. Knight (*)
Vicky Kruckeberg and
Carl R. Nold (*)
Sandra B. and
David M. LeMieux (*)
Tedd and Carol Levy (*)
Joan Loos (*)
Arlene and David Maack (*)
Mr. and Mrs.
Kenneth J. Mandile (*)
Mark Mattson and
Judith L. Lane (*)

Gail M. Morgan and
Bernie Lempicki (*)
Barrett Morgan (*)
F. Michael Novick (*)
Dennis C. and
Carol H. O'Dowd (*)
John and Lili Ott (*)
Christopher and
Joanne Podles (•) (*)
Tammy C. and John P. Rawls (*)
Shirley I. Reichenberg (*)
William B. and
Julianne Reid (•) (*)
Cara and Jesse Revett (*)
Joyce M. Rivers (*)
Alice and Robert E. Roemer (*)
Roberta Sawtell (*)
Irving and June Schoppe (*)
Wendy and Samuel Shattuck (*)
Irwin and Melinda Simon (*)

Madeline and Todd Smola (*)
Dr. Charles A. Sommer and
Mrs. Sheryl A. Sommer (*)
Dr. Karsten Stueber and
Dr. Manisha Sinha (*)
Don and Kathy Stuhlman (*)
Marita Tasse (*)
Christine Tieri and
Dennis Antonopoulos (*)
Patricia and Leonard Vairo (*)
Robert Walto (*)
Paul Warner (*)
Mr. and Mrs.
Donald H. Weinhardt (*)
Claire Williams (*)
Kenneth and Hsui-lin Winkler (*)
Barbara H. Wuth (*)

Old Sturbridge Circle

Old Sturbridge Circle recognizes those individuals that gave \$1,000 to \$2,499 this year. Old Sturbridge Circle donors provide a foundation of support that maintains and nurtures the Village. Our generous donors at this giving level receive a complimentary membership and are honored at the annual Federalist Dinner.

Benefactors
(\$1,500 - \$2,499)

Anonymous
Bryant and
Elisabeth Andrews (*)
Ron and LuAnn Benoit (*)
Charlotte A. Bramley (*)
Rusty and Kate Corriveau (*)
Roger W. deBruyn and
Deborah J. Howard (*)
David R. and Molly W. Dye (*)
Janet E. and Robert H. Garon (*)
Henry M. Haggerty (*)
Paul Houston (*)
Mr. and Mrs. H. T. Jensen Jr. (*)
Brock W. and Barbara Jobe (*)
D. Alden Johnson (*)
Edward R. King (•) (*)
William O. and Jane R. Low (*)
Charles T. Skillings (*)

Joseph Peter Spang III (*)
Gary F. and
Judi C. Vaillancourt (*)
Michael Valanzola (*)
Elizabeth Wycoff (*)

Sustainers
(\$1,000 - \$1,499)

Anonymous
Richard A. Altman (*)
Mark and Linda Amadio (*)
Ann Marie and
John G. Argitis (*)
William T. Babcock (*)
William and Jennifer Bailey (*)
Steven G. and
Sheryl Bernhard (*)
David and Jo-Ann Black (*)
David C. Brough (*)

Robin Broughton (*)
Mr. Van M. Brown and
Ms. Wanda E. Tillman (*)
Jeffrey and Martha Buchanan (*)
Denise B. and
Robert B. Clemence (*)
Steven and Lisa Dalberth (*)
Kim G. and Judith N. Davis (*)
James S. DeWolf (*)
Joanne and Peter Dirlam (*)
John B. Dirlam (*)
William and Peggy Dixon (*)
Rosemary V. Donahue (*)
James and Kristyn Dyer (*)
Joan Ferguson (†) (•) (*)
Carol A. Gainey (*)
Richard Goff (*)
David J. Gravel (*)
Limond Grindstaff (*)
Steven Halterman (*)



John Collins Photography

FIELD OF FLAGS The *Field of Flags* campaign honors our active-duty military and veterans. Each year, we build a field of American flags in front of the museum's entrance from Memorial Day through Labor Day. Each flag provides complimentary admission to the Village for military families throughout the year. Last year serving nearly 5,000. The flags also serve as tangible reminders of their service and sacrifice, and a physical expression of our gratitude. The over 770 individuals and groups remembered for their service during the 2019 campaign were listed on honor boards displayed alongside the Field of Flags. They have not been listed individually in this report.

THANK YOU LEIGH AND JEFFREY GIARDE

Speaking from her home in Redlands, California, Leigh Giarde recalled the first time she and her husband Jeffrey first visited Old Sturbridge Village. “We were in the Boston area for an extra week before we went on a 35-day cruise to Europe. We love history. My husband had researched and said there was this old interactive village, let’s rent a car and go out. He’s a photography buff as well and there’s this section on a lake by a covered bridge [at the Village]; the minute he walked out on that bridge, he said it was like psychotherapy. It was a pastoral setting; it’s quiet and historic and it was cool under the trees.”



Leigh and Jeffrey Giarde

Leigh and Jeffrey are both appreciative of the slower pace of the Village. “The first thing that ever pulled us in was the serenity of the place, the solitude. There are so many nice little areas that you can pause for a few minutes,” she said. “For me, it’s like going into a resort because I take a deep breath and it’s so calm. We also love the ability to step back into history to be able to appreciate our past and better gain a perspective on all we have today. I’m fascinated by textiles. I spent 2 ½ hours talking to the gals who were dying the wool

and weaving with the wool. It’s something we don’t have in California. We don’t have that kind of immersive experience. And it’s so serene to just walk around. So, every time we’ve ever been to Boston or in that neck of the woods, my husband always diverts us to Old Sturbridge Village. We’ll be 250 miles from the Village, so we’ll take a side trip.”

Despite living across the country, Leigh and Jeffrey keep Old Sturbridge Village close in their philanthropic giving. They make regular monthly gifts through an automatic credit card payment, as well as making gifts in response to special appeals. “We give both ways – monthly and gifts to appeals,” Leigh said, “The monthly is so easy because we set it up and it charges right to my credit card. If you say, can you give \$600? That sounds like a lot of money. But if you say, can you do \$50 a month, that doesn’t sound like a lot. It’s so much easier when you set it

up that way.” Leigh and Jeffrey also appreciate knowing the impact of their gift. “The Village is always specific about what [the donation] is for. It gives us a feeling of being a part of what you’re doing.”

Leigh and Jeffrey are both deeply proud of their families’ record of military service, citing Old Sturbridge Village’s commitment to the Field of Flags and our status as a Blue Star Museum as reasons why they choose to support the museum. “For me,” Leigh said, “It was the Field of Flags and your honoring military veterans. Both of my parents served in World War II. My husband’s father and grandfather and uncle all served in World War II. So that concept of honoring the veterans and contributing to the Field of Flags really appealed to us.”

VILLAGER DONORS

Old Sturbridge Village donors who make Annual Fund gifts of \$1 to \$999 are recognized at the Villager level. These donors support the Village through unrestricted gifts that may be applied where they are most needed and support ongoing and new projects and programs. We deeply appreciate our Annual Fund donors who allow the Village this flexibility and support our mission.

\$500 - \$999

Anonymous
Charles T. and Mary Blanchard
Amy and Richard Bowen
Michael Braney
Mr. James B. Broadhurst and Ms. Jill Rulfs
Peter and Melissa Brown (*)
Ellen Catlin
Peter T. and
Jacqueline Chechile (*)
Stephanie Dell’Olio Luchino
Kathy Demarest
Christine Ermenc and Bill Hosley (*)
Robert and Linda Fiscus (*)
Warner S. and Mary F. Fletcher
Donna G. Gay
Leigh and Jeffrey L. Giarde (•) (*)
Doug and Chantal Gilbert
David R. and Rosalie Grenon
Stephen L. and Sharon G. Jackson
Catherine W. Jenkins (*)
Allison and Mike Jenkins
Mary Beth and Lawrence Keefe
Robert Kersting and Ann Marie Mumm (•) (*)
David Krikorian and Kristien Creamer (*)
David S. and Lucinda Lee (*)
Donald G. and Jo Ann Leitch (*)
Marvin Mann and Joyce Ray (*)
Ellen S. Mara (*)

Ray Noss (•)
Margaret Noyes
David and Margaret Phelps (*)
Cynthia and Stephen Pitcher
G. Roger Poynton (*)
Alan and Gerri Predella
Amy B. and David Reilly
Richard J. and Barbara J. Rossman (*)
Howard and Nan Sands (*)
Charles N. Sewall (•) (*)
Mr. and Mrs. Doug Simmons (•)
Josh and Jamie Skowyra
Greg Smith
David L. and Margaret A. St. Onge
Todd and Julie Tallman
John E. and Judith D. Taylor (*)
Susan and Nicholas Tretter (*)
Claire Williams
Alan Zanich (*)
Futao Zhao and Jing Ou (*)

\$250 - \$499

Anonymous
Shari Agatstein (*)
Margaret Ahlback (†)
Mrs. Sharon S. Ambrose and Mr. John P. Ambrose Jr. (*)
Susan and Larry Barlow
Paula and David Bowne (*)
Alastair Caperton and Sara Hill (*)
Marta Collins

Susan and Robert A. Console (*)
Nancy R. Coolidge
Marjorie A. Cooper (*)
William A. and Darexa C. Cosnett
Susan R. and Marc A. Daniel-Dreyfus
Linda E. and Ronald J. (†) Denault (*)
Elizabeth Diggs
Paul J. and Rebecca J. Edmunds
John and Christine Ellis (*)
Emsbo-Mattingly Family
Walter J. and Mary J. Engels (*)
Janet O. Fales
Dennis Fiori and Margaret Burke
Mallory Flagg and Christina Arpin (*)
Mark W. and Janice I. Fuller (*)
Michael L. and Linda J. Gardner (•) (*)
Sharon and Robert Gormbley (*)
Craig S. Harwood
Karen Haywood
David J. and Joan M. Healy
Henry F. Hicks Jr. and Amy Louise Hicks
Vivianne J. Holmes and Prilla Coffin
Catharine and Garry Holmstrom
Mr. and Mrs. Allen Horn (*)

Key
(†) Deceased
(•) Monthly Donor
(*) Member

Every effort has been made to ensure the accuracy of these lists. We apologize for any omissions or errors.

Village Donors Continued

Timothy J. and
Kimberly K. Kats (*)
James B. Kenary IV
Marian B. Koob (*)
Bruce and Donna Kosa (*)
Steven M. and
Mary Lacaire (•) (*)
Lauren M. and Stephen M. Lake
Rick LaVergne (•) (*)
Daniel Lavoie (•)
Gerald Lemega and
Nancy Lemega-Watt
Mr. and
Mrs. Ronald E. Lindblad (*)
Harold W. Low
Lisa M. Lyman (*)
Taylor C. MacFarlane
Marty Massaro (*)
Denis M. Melican and
Lois Breault-Melican (*)
Gary Meyer and
Andreea Radulescu (*)
Susan Millinger (•) (*)
Bradley and
Phyllis Nutting (•) (*)
Tracy M. and J. Paul Oates (*)
Elizabeth and Robert Owens
Marta Pajak
Ralph and Jane Peck (*)
Philip and Jeanine D. Pettinelli
Paul and Laureen Pfizenmaier
Scott and Beth Powell
Lisa and Peter Predella
Frank W. and Anne L. Puffer (*)
Susan Quick (•) (*)
Carl and Sandra Rapp
Ms. Carole Anne Reiszal (*)
Michael Rettger and
Theresa Bearden-Rettger (*)
Cornelia Roberts
Christian Robison (*)
Ruth Ruben
Jean Rugani
James and Shana Salzano (*)
Thomas Sanderson

Mark L. Seeley and
Elise M. Forbes Seeley
Ms. Nancy L. Sencabaugh and
Mr. John Maciaszczyk (*)
Rick Simpson
Sara M. Smith (*)
Dee and Bob Stewart (*)
Stephen J. and Cheryl Szydluk (*)
Geneva Thorndike
Karen and Jay Trepp (*)
Herb and Jean Varnum (*)
John J. Welch (•) (*)
Robert M. Whelan, Jr. and
Kathleen M. Whelan
Linda M. Wilder-Curtis
Linda W. Wiseman
Lucy H. Wong (*)

\$100 - \$249

Anonymous
Mary A. and Lennart H. Aberg
Jane and Charles Accatino
Virginia L. Aldrich (*)
James and Sandy Allen (*)
Teresa Alvarado
Jennifer E. and
Timothy T. Anderson (*)
William S. Andreas (*)
Matthew Arnott
Marie Arsenault (*)
Susan Ashman (*)
James Austin (*)
Gabriele Austin
Caitlin Emery Avenia and
Gregory Avenia
Regina K. Badura and
Egbert E. Most
Sara Baker (*)
George A. Balko
Mark and Trish Ballou (*)
Frederick D. and Janet Ballou
Barbara Banda (*)
Stephen F. and MaryEllen Banks
Ronald A. and
Gayle A. Bannister
Larry and Susan Barlow
W. Lewis Barlow

Joanne R. and Whitney Barnard
Georgia B. and
James H. Barnhill (*)
Paul Bartony
Mr. and Mrs. David Batstone (*)
E. Roy and Sally Baum (*)
Nicholas Burns and
Libby Baylies (*)
Rick and Kate Beatty
Alice C. Belden
Michele and Alan Bembenek
McKey W. and Berkman
Elizabeth and
Michael Bertheaud (*)
Nancy D. and John F. Stevens
Doris L. Bessette
Elizabeth Bevan
Mr. and Mrs. Nicholas Bik
David F. and Sarah L. Biron
Norman Bitsoli
Fred Blair and Rick Churchill (*)
Michael and
Wendy Blanchflower
Ralph C. Bloom (*)
Kristin Bluemel
James D. Blum
Ray Boas (*)
Christopher J. and
Carolyn A. Brandt
Elaine Briggs
Hugh Brower (*)
David B. and Sandra P. Brune
Albert and Carol Brunelle (*)
Nancy and David Bull
Robert L. and
Tina T. Burnham (*)
Dana L. Campbell (*)
Martin and Astri L. Carlson
Stephen and Becky Celuzza
Mark and Phyllis Cerel (*)
Tom and Carol Cerny
Jeffrey W. Champlin (*)
Ray and Pat Chappell (*)
Sara B. Chase and
Lincoln T. Potter
Stephen and Kate Chesley
Harold and Laurel Chesson



*Old Sturbridge Village
with my boy today was an
absolute dream. First of all,
I love this place. It brings
you to another place in
time. Second of all, Johnny
loves it too! He was thrilled
with all the living history
exhibits and way of life...
OSV is definitely "more than
a museum."*

From a Home School Mom

David B. Chosiad and
Paula Thompson (*)
Deborah and
Christopher Cini (*)
Barbara A. Clancy (*)
Hamer D. Clarke (*)
Maureen Clifford
John Cloutier
Martha M. Cobbs
Priscilla Cogan (*)
Edward S. Cooke and
Carol Warner
Sandra L. Coulter
Carole and John Cox (*)
Kenneth and
Katherine Cranson (*)
Bruce Craven and
Christie J. Higginbottom (*)
Harold S. Crowley Jr. (*)
Elizabeth and
Christopher Crowley
Sandra M. and
Anthony D. DaDalt (*)
Susan Damian (•) (*)

Karen Darley
June C. Davenport (•) (*)
Randall E. Decoteau (*)
Stephen P. and
Nancy L. Delage (*)
Glenn C. DeMallie
Linda DePaoli (•) (*)
Dorothy B. Derick (*)
Lois and Robert Desaulniers
William C. and
Debra M. Dieffenbacher (*)
Alan C. Dodd (•)
Edward and Elaine Donahue
Robert and Lori Doscher (*)
Kenneth F. and Melanie B. Dull
David W. and
Barbara D. Dykhous
Nancy Eaton
Alvin A. Eichorn
Cindy and Robert Elder
John G. and Diane S. Engle (*)
Linwood M. Erskine Jr. (*)
Raymond and Lorraine Eurto (*)
Mr. and Mrs. William L. Ewen (*)
Mr. and Mrs.
Steven A. Fangmann (*)
Catherine Farrell (*)
David H. and
Elizabeth G. Farrell (*)
Diane Farrell (*)
Shawn G. Farrington (*)
Dale and Lucette Favreau
David S. and Cindy A. Fehringer
Margaret Ferguson (*)
Marilyn J. Flavin
Susan Freelund (*)
Martha C. and Louis M. Galie
Thomas A. and Virginia Gasho
Janet Gauvin
Jacqueline G. Gay (*)
Audrey B. Gervais
Susan and Ben Getchell (*)
Connie and Robert D. Gibson
The Gibson Family
Charles R. and Michelle R. Gill (*)
Suzanne and
Michael W. Gillman (*)

Michael and Barbara
Gionfriddo (*)
Maureen L. Glowik (*)
Bradford L. Goldense
Richard and
Karen Goodwin (*)
S. R. Goody
Robert B. and
Katherine L. Green (*)
Theodore D. R. and
Mary Faith R. Green
Mr. and Mrs. Joseph F. Greene
Barbara M. and
Robert A. Grover (*)
David T. and
Janet R. Grzybowski
Susan and Simon Gunnell
David R. Gutierrez and
Mazie Rice
Betty D. Hale
James Hartung and
Patricia Jagoe (*)
Jonathan E. and
Dorothy H. Hasson
Barry Hastings
Robert Hausler
Mr. and Mrs.
Dwight H. Havens (*)
The Heffernan Family
Robert and Nancy Heinlein
Lorenz Herrmann
Wendy D. and Gary A. Hietala (*)
Raycene and Bob Hilsher (*)
Pamela Hinckley (*)
William L. Hoffman (•)
Eileen and Dale Hoffner (•)
Elizabeth C. Hogan (*)
Ron and Sheila Hokanson (•) (*)
Grace and Gail Horton (*)
Alice E. and David V. Howe
Bill Howland
Mary E. Hoyer
Kimberly Hoy-Kennedy
Kent and Melinda Huebner (*)
Sara and Robert E. Hunt (*)

Key
(†) Deceased
(•) Monthly Donor
(*) Member

Village Donors Continue

John and
Ann Iacobucci
G. Reed Ide (*)
Ann Marie Incutto
Elizabeth and Richard Inglis
Alfred R. Izzo and
Sandra Donahue (*)
Susan Jarvis and
Margaret Jarvis (*)
Thomas and Patricia Johnson
Gary P. Johnson and
Luana Josvold
Joyce A. Jordan (*)
John Harry Jorgenson
Patricia Judge (*)
Richard and Linda Judkins (*)
Thomas and Karen Kamp (*)
Thomas Kane
John F. Keenan
Rachel Keller (*)
Quentin and Margaret Kessel (*)
Paul G. and Beth A. Kheboian (*)
Mark Kightlinger
Robert L. and Drue C. King (*)
Deborah and Peter Knight
Karolyn Koprowski
Tina and Daniel Krasnecky (*)
Allen A. and
Sharon A. Krause (*)
Rhett D. and Susan A. Krause
Vicki Krueger (*)
Francis R. Labbe (*)
Linda LaBell
Michael and
Caroline Lachance (*)
Cynthia and Leo Lafortune
Lucille A. Langlois (*)
Shari and William LaPierre
Gresh and Nancy Lattimore
Richard C. Lavigne (*)
Eileen and Richard Lavoie
David A. Leach and
Laurie J. LaChapelle
Patience A. Leahy (*)
Stephen E. and
Joy M. LeClaire (*)

John LeClaire and Ruth Hodges
Fiona J. Leek (*)
Warren Leon and
Cynthia Robinson
Doreen Lepage
Crawford and Ann Lincoln (*)
Arthur and Nancy Loefstedt (*)
John M. Longden
Stephen and Valerie Loring
Sarah L. and Arthur J. Ludwick
Loretta Lustig
John J. and Kathleen R. Lynch
Laura and Joseph Macaluso
Kim and John MacKenzie
Douglas E. and
Janet F. MacMillan (*)
Pamela I. and
Michael Mahoney (•) (*)
Greg Makowski (*)
Michael and Jocelyn Malamy (*)
Natalie P. and John J. Manning
Laura R. and Matthew P. Marino
Karen and Warren Marsh
Jon and Elizabeth Marx
Marilyn Marxen
Brenda Mason (*)
Robert and
Theresa E. Mathiesen (*)
John E. McAuliffe
Katherine T. and
Michael T. McClain
Joy and Matthew McCrosson (*)
Walter and Carol McDonald
David and Lorraine McElligott
Lauren McGrath
Erin McGrath
Barbara J. McGrath and
Paul J. Baker Jr. (*)
Caroline and Rob McGrath
Alfred L. McKee Jr. and
Betsy W. McKee (*)
Richard McKeon
George and Mary M. McNeil (*)
Norman J. Mercier (*)
Janis Metoxen (•) (*)
Elizabeth and Bernard Meyer



I think it's an awesome thing you do. My cousin was killed in action in 2005 during Operation Iraqi Freedom and we are so excited to have a flag dedicated in his honor. We are members and love OSV and this makes us love it even more.

*Instagram name:
@mandeedandeedo
Regarding Field of Flags*

Douglas and
Diane Meystre
Chas Miller
Barbara E. Miller (*)
Patricia Miller (*)
Thomas W. Mills
John E. Minitier Jr.
John O. and Diane K. Mirick
Sandra J. and John G. Moline (*)
Daniel and Nancy Molta
Karen Moran
William D. More (*)
James J. Morin
John Moscone (•)
Meredith W. Motyka (*)
Dan and Janet Mullen (*)
Moira Munns and
Alfred Garafalo (*)
Lori Myers and Wayne Phaneuf
David Nergaard
Garry and Cindy Nickerson
The Nimmagadda Family

Charles and Joan Norris (*)
Patricia A. and Robert C. Nuding
George and Carol Nunes
Mary and Peter Nunes (*)
Leonard C. Panaggio (*)
Lance Patterson
James and Martha Pedone (*)
Jim and Peg Perry (*)
Dennis Perry
Colleen and Dennis Peters
Ruth Peters (*)
Charlie and James A. Peterson
Marc E. and Ruth N. Peterson (*)
Susan and Richard Pileggi (*)
Matthew H. and Laura A. Pinson
Bill and Genevieve Pioppi
Robert and Margaret Post (*)
Alexandria T. and Bernard Price
Michael Prior (*)
Timothy and Cindi Prouty (*)
Valerie J. and Stephen M. Quink
Raymond and
Francine Ranellone (*)
Robin and Ronald Recos
Richard and Gayle Rediker (*)
Gail Reen
Ed and Shelley Regin
Scott M. Reichenberg (*)
Albert J. Reid (*)
William and Ellen Rewinski (*)
Russell Richins
Charles H. and Sharon Riddle
Samuel and Evelyn Rineer
Audrey Roettgers
Sandra A. and
Andrew T. Rogalski
Alyssa Rogalski
Amy and Brian Roode
Roy S. Rovozzo and
Arthur W. Rovozzo (*)
Tom and Patti Ryan
Frank E. Sadowski Jr. and
Alice R. Sadowski (•) (*)
Sheafe Satterthwaite
Thomas P. and
Caroline E. Schadlich
Jeannine M. Schetzen (*)

Joseph H. and
Peggy L. Schott (•)
James R. and
Lorraine M. Schumacher
Karen and David Seiffert (•) (*)
George B. Sermuksnis
Wilson H. and Carol L. Seward
Michael and Alicia Sharon (*)
Ms. Natalie M. Shaw and
Ms. Karen Shaw
Leslie E. Sheldon III and
Josephine G. Sheldon (*)
Debra L. and
Douglas Simmons (*)
Mr. and Mrs.
Kenneth C. Simpson
Richard Simpson
Mrs. Caroline E. Sloat
Susan and Andrew Spence
Mr. and Mrs. John R. Stearns (*)
Robin Steele (*)
Elizabeth and Stanley Suleski (*)
Thomas J. and Kathy Sullivan
Ms. Cheryl A. Suzio
Janet G. Sweeney (*)
Marshall and Bonnie M. Szalay
William R. and
Janice L. Szymanski
Robert and Anne Tattersall (*)
Sheila and George Tetler
Jean R. and Susan A. Therriault
Sally Thibodeau (*)
John L. Thorndike
Diane and Salvatore Trapasso
Kirsten Truscott
Tammy Turner (*)
R.S. Turner
Jeannine Uppgard (*)
Ronald Usher (*)
Sarah and Charles Van Auken
Nathan H. and
Beth VanDuzer (*)
Donald and Nancy Vaughan
Regina Vegliante
Laurie Wadsworth (*)
Sherman E. and
Susan S. Waldron (*)

Mark and
Carol Waltz (*)
Paul Warner
Joane D. Warner
Judith Peach Warren
Nila Watson
Mason B. Wells II
and Kathryn Wells
Peter Weston (*)
Wayland and Elaine Wheaton
Timothy Wheeler
Stephen H. Willard
Barbara Hopkins Willard
Jean M. Williams and
Nicholas G. Grant
Loretta and Richard Wilmarth
Arnold P. and
Christine A. Wilson
Paul T. and Paula Wilson
Mr. Richard T. Winn and
Ms. Corinne Broderick (*)
Paul D. Wykes and Mary Wykes
Charlene and John Yuan (*)
Jane and Jim Zavistoski
Mr. Walter Zlotnick (*)

\$1 - \$99
Anonymous
Mr. and Mrs.
Richard Abrahamson
Vivian Acosta
Jeanne and Douglas Adler (*)
Melinda S. Alexander
Carolyn and Raymond Allen (*)
Donald E. Allison and
Alison D. Snyder (*)
Diego Almansa Camacho and
Maria Baldarelli (*)
Nanci Altieri
Sandra and Richard Amoling (*)
Kathlena Anderson
Denise Archambault
James and Kathyleen Arena (*)
Jennifer and Brad Arrington (*)
Eleanor Arsenault (*)
Patrick Assad
Helen Austin

Key
(†) Deceased
(•) Monthly Donor
(*) Member

Village Donors Continued

Donald and Ginger Avery (*)
Isobel J. Baade (*)
Deborah Bachand
Catherine and Bert Baldarelli
Stephen and Rochelle Balter (*)
Thomas G. and
Margaret M. Bannon (*)
Joseph F. and Maura P. Barbato
Matthew Barber and
Leslie Brokaw
Mr. and Mrs. Jeffrey D. Barnes (*)
Joann V. Bayusik
Virginia and David Belforte (*)
Randy Bell and Kathy Goodson
Margaret Belletete (*)
Michael and
Geraldine Benjamin
Margaret M. Bermani
Maureen R. Berube (*)
Jilian Bianchi
Helene and Louis Bier (*)
Sari Bitticks (*)
Doug and Cindy Bittner (*)
Raistlin Blackstone (*)
Paulette A. and
Charles Blagburn (*)
Jacob and Nancy Bloom
Katherine and Gary Bodzioch
Tom Bogue and
Heather Osborne
Janet and Mark Bolivar (*)
Giacomo Bongiovnni
Ruth Boniface (*)
Roberta Borges
Sandro and Elizabeth Bortolon
Robert and Judith Boucher (*)
David and Linda Bourgeois
Michael Bousquet
Steven and Bridgette Boyko (*)
Susan Brandon
John S. and
Catherine L. Brandon (*)
William and Marcia Briggs (*)
Dixie and James Brigham (*)
Eric and Jenny Bright
Ellen M. and Steven R. Brill
Norma and Ronald Bromley (*)
Sally and Robert Brown (*)
Chris and Dave Brown
John and Barbara Brownlee (*)
Patricia A. and
Ronald J. Bruchmann (*)
Allan P. and
Kathy A. Bruckner (*)
Carole W. Bunnell (*)
Nancy M. Burbank
Steven Burgess
Clarence A. Burley
The Burns Family
Richard Burke
Robert Busch and Joyce E. Miller
Amanda and Dan Bush (*)
Marilyn Butler and
Mark Mancevice (*)
Robert J. Cabana (*)
Dr. and Mrs. Thomas F. Cahill
John F. and
Lucille A. Canavan (*)
Richard P. and
Rebecca J. Canuteson (*)
Robert J. and Diane Carlson (*)
Ronald P. and Andrea J. Carlson
Angela Caron
Linda Carpenter
Doe and John Carroll
Charles Cary
Ashley Casavant
Rebecca and Chris Casey (*)
Richard A. Catanese
Sam Cathey
Rebecca and Stephen Celuzza
Christa and Kevin Chandler (*)
Jon B. Chaney (*)
Susan Chaplin (*)
Alan T. and Virginia Chapman (*)
Allan and Carol Chenette (*)
Constance and
James C. Chesebrough (*)
Mary and Craig Cheyne (*)
Robert P. and Evelyn Chorney (*)
Margaret M. and E. Peter Church
Chris Chute
Paul A. and Elizabeth A. Cilley (*)

Lisel Clancey (*)
Kim N. and Stephen H. Clark
Leroy and Gail Clark (*)
Michelle V. and
Raymond F. Cochran
Amy Coddington (*)
Marla Cohen
Diane and John Collins (*)
Eileen and Theodore Colwell (*)
Kathleen Comer (*)
James A. Connally (*)
The Connole Family
Jennifer and Rajeev Connors (*)
Carol and James H. Constantine
Laura Cook
Ms. Nancy N. Cook
Tatumn Coraccio
Joan P. and Wesley Cormey
Kate and Rusty Corriveau
David and Jean Cossey (*)
Richard E. and
Charlotte H. Cote (*)
Gregory Cote
Judith M. Coulon (*)
Dale Coulter (*)
Shirley and Wardwell Cox (*)
Christina Cronin and
Mark Langevin
Jay Cronin and Ann Walker (*)
James Croteau
Fan and Eric Cruickshank (*)
Gonzalo and
Kathryn Cruz Blanco (*)
Lawrence J. and
Nancy E. Curcio (*)
Joshua Custance and
Jennifer Polesnak-Custance
Stephanie and Roy Cuzzocreo
Michael Czmyr
Jim and Lorraine Dadalt
James and Esty Daly
Paul J. Damery
William Daoust
Robert F. and Cheryl T. Darling
Dianne and
Scott Davies (*)
Lynne Davis



On Father's Day, when the blacksmith noticed that the gentleman was using an ASL interpreter, the blacksmith became more animated and provided time between talking and having his words translated for the visitor to understand. I commend him on providing excellent service to visitors.

-Sylvia R.

Donald L. and Elaine J. Davis
Chirstopher Davis
Robert A. and Carol J. Davis (*)
Elizabeth Davol (*)
Cynthia M. de Bruyn Kops
Kevin Dean
Carlton and
Carol DeBeradinis (*)
Alan N. Degutis and
Elaine Johnson (*)
Wendi Delaney (*)
Suzanne E. deLesdernier (*)
Sally S. and
Kenneth R. Demars (*)
The Demers Family
Gina DePaoli
Roman W. and
Ruth A. DeSanctis
Clement and Alice Apostol
Mary and Joseph DeStefano (*)
Dolores DiAngelo
Rev. Charles Jan Dimascola (*)
Thomas Dolan (*)

Rebecca and
Richard Donohue (*)
Richard and Wendy Doucette
Rebecca Downie
Gary and Denise Drapeau
Ruth B. Duhamel (*)
Susan M. Dundulis (*)
Edward M. and
Sally-Anne Dunn (*)
Judith A. and
Eugene M. Durso (*)
Ingo R. Dutzmann
Douglas K. and
Edeltraut Earle (*)
Brian E. and Laura Eckenrode
Judith Ann Elfring
Adelene Fistedis Ellenberg
Robert and Elizabeth Ellis (*)
Spencer L. and Charlotte Empet
Margaret A. Enos
Ramey and Carol Erickson (*)
Robert E. and
Kathleen K. Evans (*)
Mr. Leo L Faille Jr. and
Mrs. Debra A. Faille (*)
Carol Ann Falasca
Marguerite and Doug Fifolt
Ellen and Robert Finelli
Lloyd Fisher (*)
Mr. and Mrs. Aubrey Fisher (*)
Peggy and Roger Flavell (*)
Wayne and Roberta Fletcher (*)
Lucia H. Focht (*)
Charles and Elizabeth Foley (*)
Katherine Folker
Ronald and Ann Follo
Mary M. Fontana (*)
Michael and Marie J. Forand (*)
James J. and Susan H. Forrest
James and Elizabeth Forrest (*)
Jennifer L. and John L. Fortin (*)
Karol T. and Robert Foster (*)
Helen and James Foyle (*)
Stephen A. and
Joann M. Freitas (*)
Marc Gaertner
David L. and Ann H. Gaesser

Ed Gajewski
Molly M. and
Samuel A.
Galano (*)
Diane Galipeau
Kent Gallego
Melissa Gallin
Mary M. and Israel Garcia (*)
Stephanie Garcia
Joseph J. and Cathy L. Garrity
Ernest and Shelah Gaudet (*)
Richard Geer
Laura and Gerard Geggis
Rollande Gibeault
Sandra S. and Richard Gibson (•)
Cheryl A. Giovannucci (*)
Richard Gisonda
Mr. and Mrs. Roger W. Glode (*)
Vicki E. Goehring
Kelly Gonya
Ed and Sue Grace
Anne and George Grady
Susan W. Greene
David B. and
Deborah Gustafson
Judith E. Gutman
Charles F. Haag
Donald A. and
Nancy E. Haapakoski (*)
Darlene and Peter W. Haddad (*)
Sue Hagberg (*)
Peter Hamlin and Lee Mason (*)
Louise R. Hammann (*)
Elizabeth and Tom Hammett
Richard Harding (*)
Sharon and Adrienne Hardy (*)
Phillip and Kerrie Harper
David A. and
Patricia A. Harris (*)
James Harvey
Benjamin E. and
Betty Ann Haskell (*)
Ronald D. and Paula J. Haskell
Paul and Linda Hatch (*)
David Hayden and
Elizabeth Hall
Martha and Richard Heath

Key
(†) Deceased
(•) Monthly Donor
(*) Member

Village Donors Continued

Norman L. and Linda Hecht (*)
Dunnith and Sharon Heenan (*)
Joan Hefner
Peter and Kate Heitman
Jacqueline A. Hemeon
Jason and Sandy Hennig
Robert and Jean M. Herbert
William M. and
 Marie E. Herlich (*)
Elaine Heyde
Darlene and John Heywosz
Martha Higgins (*)
Ken and Cynthia Hilbert
Joanne and George Hill (*)
Robert H. and Mary Hillick (*)
Juliet Hilzinger (*)
Barbara A. Hitchcock
William and Mary Ann Hofmann
Pamela and Arthur Holbrook (*)
Rachel Hollenbeck
Ronald and Gail N. Holloway (*)
Christopher Hopkins
Betty and Robert Howard
David and Mary Howarth
Bruce Howell
Claudette Hughes
Avis G. Hull (*)
Charles F. and Marlene Hummel
Arno Hurd (*)
Christie Jackson and
 Elijah Cocks (*)
Mildred Jacques
Dennis and Louisa Jacques (*)
Sandra and
 Adam Paul Jajliardo (*)
Julie and Jerome Janisko (*)
Donna and Michael Jellen (*)
Laura Jenemann
Cynthia H. Jenkins (*)
Darrel Jenson
Kimball Johnson
Deborah and Scott Johnson
Mr. David S. Johnson III and
 Mrs. Joan J. Johnson (*)
Robert and
 Mary F. Johnson-Lally (*)

George and Sundi Jones
Frank and Martha Jordan (*)
Kalika Household
Joyce E. and
 Peter W. Kalika (†) (*)
Robert and Sue Kancir (*)
John Karlin (*)
Richard Kaskeski (*)
Lois and Kevin Kehoe
Kathie Swanson Kelly (*)
Lori Kelly
Sean C. and
 Catherine A. Kennelly (*)
Eric Treschuck and
 Nicole Kenney (*)
Merrill Kennison (*)
Jerome W. and Ann G. Kilburne
W. Scott Klinger (*)
Cheryl Koleshis (*)
Lawrence and Kathleen Konsin
Sandra P. and Peter N. Kotsifas
John and Sara Koziol
Susan and Kenneth Krech
Laura and Thomas Kroll
Robert and Darlene Kruckas (*)
Suzanne and
 Mark Krupienski (*)
Catherine S. Kunashevsky (*)
Alan R. and Lynn D. LaBelle
Nicholas LaChance
Dean and Elizabeth Lahikainen
Francis and Gwen E. Lallier (*)
Claire and Robert Lamontagne
Shirley Lampron and
 Raymond Warren
Francis and Tina Langevin (*)
Charlene M. and
 Lenny Laporte (*)
Jack and Anne Lazor
Gabriel and
 Katherine Leblanc (*)
Sharon and Mark Lebowitz (*)
Christine Ledder
Susan and Robert Lemire
Elaine C. Lengowski (*)
Christopher and
 Alison Lennon (*)

Donald Leone
Judith A. Leveille
Arthur Levesque
Nancy and John Lewenczuk
Rae Libby and
 Beth Harrington (*)
Thomas Long
John and Karen Lopes (*)
Ann T. MacDermott-Keefe (*)
Roberta S. Madel
George R. Magee III and
 Martha Seeton-Magee (*)
Marc and Lynden Magnoli (*)
Theresa Mancari
Carol A. Mancini (*)
F. Giorgio and Nancy Mangari
Katie Manty and David Seitz
James Mantzios (*)
Matthew P. and Laura R. Marino
Richard A. and
 Patricia Markert (*)
Robert Mastriani
Ciro Matrecano (*)
Marcia Matthews (*)
Wilhelm H. and Ingrid T. Mauss
Joseph Mazzie
Olive M. McCabe (*)
Paul McDonough and
 Carla A. Blakely
Robin B. McFee (*)
Sarah and Bill McGee (*)
Michael J. McLearn and
 Donna Heffernan-McLearn (*)
David W. and
 Ginette A. McVeigh
Brian S. and Teresa Mead (*)
Mary M. Meese
Jonathan and
 Christina Melzar (*)
Carmella Metz
Donald and Carmella Metz (*)
Susan Miller (*)
Kathryn Milner (*)
David L. Moiles (*)
Maria V. and Clifford W. Morey
Sarah Morin (*)
Carol A. Morocco (*)

Adrienne C. and Stewart Morris
William and Gail Moulton
Holly W. Moulton and
 Kizito Muliro
Marie L. Mueller
Glenn P. and Lisa Muir
Kenneth and Yvette Munroe (*)
Bill and Kim Murphy
Sandy and David Murray (*)
Charles Nathan
Catherine Neron
Jan and John Neumuth
Mr. and Mrs. Bruce Newlands (*)
Phyllis Nichols
Catherine L. Noble (*)
Alan Nordell and
 Lee Fitzgerald (*)
George and Deborah Nydam
Dorene O'Hara
Mary Ellen J. and Paul O'Brien
Carl A. Ohlson
Kaitlyn O'Konis
Ann and Stephen Olszewski (*)
John J. and Nancy A. Pacyna (*)
Patrick Palmieri (*)
Ralph A. Parente Jr. and
 Joseph P. Rice
Young Park and Hyun Choi (*)
David J. and
 Theresa A. Parker (*)
Sue and Charles Parkins
Robert and Diana Parry
Mary E. Patulak and
 Terrence O'Toole (*)
Summer and Peter Paulos (*)
Sheila Pavia-Jones and
 Richard Jones (*)
Rodney Pease (*)
Jane Pease (*)
Mr. Jeffrey A Peck and
 Mrs. Sandra Peck (*)
Charles and Barbara Peloquin
Sherri and Glenn Pelski
Judith Perron
John Perry
Annette and
 Christopher Peterson

Lauren Pettinelli
Ruth C. and
 Ernest J. Pickhardt (*)
Mr. Robert B Pierce Jr. and
 Mrs. Marita McKendall Pierce
Lynne and Leslie Pitman
Nancy Pope (*)
Amber and Mark Popovitch (*)
Peter and Lisa Predella
Paul and Marjo Prinzing (*)
Barbara and John Pryor
A. Russell and
 Carol A. Pytko
Jodi Rabat
Susan and Christopher Rabbitt
Kristen and Scott Ricard (•) (*)
Sheila C. and Stanley E. Rich (*)
Frances and
 William J. Richardson (*)
Julie Riley
Kathryn and John Rizzo (*)
Harriet and Jordan Robbins
Ms. Donna Robbins and
 Mr. Peter Marcotte (*)
Kyle Roberts (*)
Annette M. Roberts (*)
Stanley Rogalski
Diane and Josef Rokus
Theodore and Diane Rollins (*)
Amy and Brian Roode
Kevin Rothschild-Shea
Mike Roy
Nancy Roy
Ardis Rundlett
Frederick S. and
 Patricia A. Rushton
David F. and Susan M. Russell
Holly and John Ruzicka (*)
Edith Ryall
Tracy Ryan
Philip Ryder
Mohammed Saah
Robin and Thomas Sarnacki (*)
Alan R. and Brenda D. Sauer (*)
Eric S. and Pamela Z. Sawyer
Gerald Sazama and
 Kenneth Sazama (*)

Janice M. Scheffler
Paul E. and Barbara
 J. Schildt (*)
Muriel C. Schmidt
Joseph K. and
 Maureen E. Schneider
Adam Schwartz
John and
 Dianne Schwarz
Valerie and Tim Seery (*)
Ilene Segal (*)
Elizabeth and
 Stephen Sergio (*)
Jeremy and Nancy Serwer
Debbie and Edward Shail (*)
David and Kathryn P. Shapiro
Elaine and Jeremy Shapland (*)
Andrew and Sherrie Sharron
John and Anne Shaw Sr.
Robert and Alice Shaw (*)
Susan K. Shea (*)
Barnett Shepherd
Beverly M. Shipman (*)
Robert and Ellen Shuemaker (*)
The Sicard Family
Ross G. Siddell Jr. and
 Rick J. Valeriy (*)
Barbara and Theodore Simmons
Dianne Simmons and
 Julie Kranert
Susan Simmons (*)
Vivian Sinder-Brown (*)
Travis and Judy Sirrine
Beverly Sivula (*)
Slaiby Household
Roseann and David H. Smith (*)
Mary P. Smith (*)
Marjorie L. and Walter Smith (•)
Chase Smith
Mrs. Donald S. Smith
Doris B. Sosik (*)
Michael and Christine Sosik
Janice K. and Matthew Sosik
Jeffrey Soukup (*)
Douglas Soule
David and Judith Southland

Key
(†) Deceased
(•) Monthly Donor
(*) Member



My military ID allowed free admission for myself and my son. I was thoroughly impressed by OSV. My son has repeatedly thanked me for taking him to such a 'neat place' and is asking when we can go again and take more of the family. That a 13 year old was so impressed by OSV is a major indicator of the quality of your museum/village. Thank you for a wonderful, memory-making experience.

- Linda J.

Village Donors Continued

Joyce Southworth and
Ray Roderick
Lucinda Spaney (*)
Gary Sparrow and Pat Pratt (*)
Kristin Spiess
Stephen A. Spongberg
Dawn St. Germain
Keith H. Stackhouse
Jonathan and Heather Stapel (*)
Maurice Stapleton (*)
William and Jennifer Starnick (*)
Michelle Steger
Daniel L. and Beth Steinke (*)
Daphne and Michael Stevens (*)
David L. Stewart III and
Carole Stewart (*)
Keith Stewart
Carlton A. Stidsen (*)
Henry F. Stockmal
Sandy and Pam Stoddard
Joanne and Donald Brunelle
Peter Sutton (*)
Mary H. Swanson (*)

Janina Swiacki (*)
Nancy A. Swiacki (*)
Lorice A. Swydan
Marcia G. Synnott (*)
Mr. and Mrs. John G. Talcott III
Steve Tallman
Mr. and Mrs.
Joseph E. Tancrell III (*)
Dick and Pat Taylor
Annamaria Tegarini (*)
Deborah and Stewart Terrien (*)
Deborah Terry
Stephen and Katrina Thompson
Gary and Patricia Thornburn
Jack C. Thornton Jr. and
Judith A. Thornton (*)
Lauria and Frederick Tiberii (*)
Paula M. Tiberii (*)
John J. and Susan I. Tichy (*)
Arthur Tieri
Terrence W. and
Celeste M. Tomasko (*)
Nancy Toomey (*)
Rudy and Phyllis Trask
Kenneth and Molly Truesdale (*)
Shel and David Tscherne (*)
Julia Turgeon
L. Emerson and
Joanne H. Tuttle (*)
Beverly R. and Ronnie H. Tyler
Kristina M. Tyree (*)
Carolyn Udvardy
Sharon Uguccioni and
Joseph Scanlon (*)
Matthew P. and
Barbara Valenti (*)
Luis Valentin (*)
Rick J. Valeriay (*)
Joanne C. and
Cory O. Van Buskirk
Sylvia Varney
Mary Vautour
Jesus and Maria Vazquez (*)
Frances Volpe (*)
Benjamin and
Rebecca Waber (*)
Noel E. Waite (*)
Janet Waldron (*)
Allan and Carrie Walker

Deborah and
William J. Wall Jr. (*)
Walter Wanagel and
Marjorie L. Smith
William A. and
Carol W. Wardwell Jr.
Kara Wassmer (*)
Dwight L. and Lina R. Watson (*)
Ian J. and Susan M. Webster (*)
Raymond A. Wedlake
Dr. Faith Weidner and
Mr. James Miller (*)
Ron and Ann Weiss
Paul and
Rebecca A. Wentworth (*)
William R. Wentworth Sr. and
Deborah Wentworth
Roberta Whelan
Virginia H. White (*)
Mary G. and James W. White
and Family
Kathleen Whitney
Darren A. and
Melanie S. Wilcox (*)
Patricia G. and Kenneth Wiley
Bodil Wilson
David S. and
Raechelle D. Wilson
Lorna and James Winders (*)
Gerald Wolfe (*)
Melvin and Joanne Wolff (*)
Shari Worthington
Ursula S. Wright
John Young (*)
Alex and Evenlyn A. Young
Joanne Young Sauer and
Gerald Sauer (*)
Louise M. Zajac
Pauline and Don Zysk (*)

Gifts-in-Kind
Anne Cutler-Russo
Stuart Frank
Denis M. Melican and
Lois Breault-Melican (*)
Northern Tree Service Inc.
Rene P. Paquin
Les and Jo Sheldon
Vaillancourt Folk Art

GRATEFUL FOR OUR BUSINESS PARTNERS

Our program provides businesses an opportunity to support more than a museum, with access to Old Sturbridge Village, public brand recognition at the museum, as well as memorable networking experiences.

Presenting Sponsor
(\$10,000 and greater)

Country Bank
Dexter-Russell, Inc.
Southbridge Credit Union

President Business Sponsor
(\$5,000 - \$9,999)

American Optical Foundation
FLEXcon Company, Inc.
The Haverford Trust Company
The Publick House Historic Inn
Savers Bank
Schmidt Equipment, Inc.

Executive Business Sponsor
(\$2,500 - \$4,999)

bankHometown
Cornerstone Bank
Harvard Pilgrim Health Care
Load Controls, Inc.
National Grid
Polar Beverages

Director Business Partner
(\$1,500 - \$2,499)

Bond Construction Corporation
Edward Jones
Fluid Coating Technology, Inc.
G & F Precision Molding
Karl Storz Endovision, Inc.
Millennium Power Partners, L.P.
Osterman Management, LLC
Palmer Paving Corporation
The Salem Cross Inn, Inc.
SCHOTT North America, Inc.
Warren Roofers, Inc.

Associate Business Partner
(\$1,000 - \$1,499)

All Star Incentive Marketing
Avidia Bank
Big Y Foods, Inc.
Bowditch & Dewey, LLP
Excel Dryer, Inc.
Harrington Memorial Hospital
Kookla Inc. DBA Dunkin Donuts
OFS Fitel, LLC
Risk Strategies Company
Southbridge Hotel and
Conference Center
Sturbridge Veterinary Hospital
Timeless Treasures Fabrics
of Soho, LLC
DBA Marcus Fabrics
United Lens Company, Inc.
Universal Tag, Inc.
Yankee Spirits, Inc.

Supporting Business Partner
(\$500 - \$999)

Hitchcock Pool Water
JSL Asphalt, Inc.
OCCU-MED
Steve's Collision Center
Webco Chemical Corporation

Other Organization Support

AmazonSmile
Atlas Distributing Corporation
Baba Sushi
Big Alum Lake Association
Charlton Family Practice
Clark Mailing Services
Comtran Cable LLC
Dennis Historical Society Inc.
The Hanover Insurance
Group Inc.

Mid State Sewerage Inc.
Mirick O'Connell
Steam Automobile Club of
America – NorthEast
Warren Community
Elementary School
We're All In This Together, Inc.
Yeshiva K'tana of Waterbury
York Rite Bodies of Worcester
The 9th Massachusetts Battery
Light Artillery Army of the
Potomac Inc.

Matching Gifts

Aetna Foundation Inc.
Alexander, Aronson,
Finning & Co. P.C.
Bank of America
Charitable Foundation
Boeing Gift Matching Program
Cengage Learning
Dell
Eaton Corporation
GE Foundation
The Hartford Fire
Insurance Company
IBM International Foundation
Johnson & Johnson
Family of Companies
Liberty Mutual Insurance Group
NetScout Systems Inc.
NRG Energy Inc.
Praxair Matching Gifts Program
Sun Life Assurance Co.
of Canada
Travelers Companies
UTC Aerospace Systems
United Way
Waters Philanthropy

PRESERVING OUR COLLECTIONS

The curatorial department is committed to improving environmental conditions across the Old Sturbridge Village campus.

Though mold most often manifests on objects, we are also concerned with the preservation and well-being of our historic buildings. Thanks to a grant from the National Endowment for the Humanities for Preservation Assistance, we hosted a consultant, Anne Marie Willer, from the Northeast Document Conservation Center

(NEDCC) in March of 2019 for a half-day storage evaluation and a full day mold response workshop. We were also able to purchase equipment which will better enable us to monitor and respond to environmental issues as they arise in our collections and exhibition spaces. In particular, we purchased

better environmental monitoring devices and a new hepa vacuum. Together, this equipment will allow us to monitor the environment in spaces across campus, intervene before temperature and humidity factors become problematic, and treat objects with inactive mold present. 🦋



Improving visitor experience at Old Sturbridge Village
Gallery B was temporarily repurposed as a theater where visitors can view a new orientation film and exhibition. The 5-minute video, which plays continuously throughout the day, welcomes visitors to the Village, explains what the Village is and what visitors can expect when they leave the Visitor Center, provides a brief history of the Village's founding, and describes the Village's layout to help with wayfinding.

In addition to the video, a new exhibition highlights the evolution of the Village's Museum Collection and allows visitors to see objects which normally remain in storage.

FOUNDATION SUPPORT

Charitable foundations provide resources for many of the Village's programs and activities. Through restricted and unrestricted grants and gifts, foundations have a significant impact on our ability to meet our mission. We are deeply grateful for the foundations who help us keep history relevant and accessible.

- | | | |
|--|---|---|
| Anonymous | Highland Street Foundation | Sarah A. Stewart Foundation |
| American Optical Foundation | The Hoche-Scofield Foundation | The Schwartz |
| H.G. & M.R. Anderson Foundation | Howland Family Foundation | Charitable Foundation |
| Beagary Charitable Trust | Institute of Museum & Library Services | Abbot and Dorothy H. Stevens Foundation |
| Chamber of Central Mass South | Massachusetts Charitable Mechanic Association | The Stoddard Charitable Trust |
| The Croll Foundation | Massachusetts Cultural Council | The Straetz Foundation |
| The Ddora Foundation | National Endowment for the Humanities | United Way of Central and Northeastern Connecticut |
| Easthampton Savings Bank Foundation | Amelia Peabody Charitable Fund | United Way of Southbridge, Sturbridge and Charlton |
| The Fletcher Foundation | Albert W. Rice Foundation | US Charitable Gift Trust |
| The George F. and Sybil H. Fuller Foundation | Rockwell Foundation | Webster Five Foundation Inc. |
| Fred Harris Daniels Foundation | Saint-Gobain Corporation Foundation | William E. Schrafft and Bertha E. Schrafft Charitable Trust |
| George W. Wells Foundation | Saquish Foundation | Worcester Educational Development Foundation |
| The Hanover Insurance Group Foundation Inc. | | |



Tribute Gifts

A tribute gift is a meaningful way to memorialize a loved one, convey sympathy, commemorate a special occasion, or honor a person’s life and accomplishments. Old Sturbridge Village is humbled to be the recipient of these tribute gifts.

Gifts In Honor of:		
In honor of Tippie and Robbie Vivianne J. Holmes and Prilla Coffin	In honor of Deborah Fahl Anonymous	In honor of Simon and Nell Nyberg Charles R. and Meredith L. Nyberg
In honor of Susan Ashman Charles A. Peters	In honor of Raymond and Corinne Galipeau Diane Galipeau	In honor of Alan S. Peppel Charles R. and Meredith L. Nyberg
In honor of Joseph Alan Assad Patrick Assad	In honor of Janet R. Grzybowski David T. and Janet R. Grzybowski	In honor of Elizabeth H. Peppel Janet O. Fales
In honor of Christine Bates Denise Archambault	In honor of Sarah Hall Anonymous	In honor of Charles A. Peters Ruth Peters
In honor of Dorothy Ann Biron David F. and Sarah L. Biron	In honor of Thruse Hammer Clarence A. Burley	In honor of Ruth Peters Charles A. Peters
In honor of Robert V. Brodeur Sr. Anonymous	In honor of Donald A. Harding Richard Harding	In honor of Meg Hammett Pierce Elizabeth and Tom Hammett
In honor of Louis and Mildred Broughton Robin Broughton	In honor of Mort Hecht Norman L. and Linda Hecht	In honor of Corrinne L. Reid Albert J. Reid
In honor of Michael D. Cimini and Angela Cheng-Cimini Marilyn K. Kucharski	In honor of Annika Hurley Lucia H. Focht	In honor of Paul E. Rogers Marilyn K. Kucharski
In honor of Ronald C. Daigle Louise M. Zajac	In honor of Richard H. Jaquish Anonymous	In honor of Barbara J. Rossman Charles A. Peters
In honor of Donna A. DeCorleto Jack and Judy Currie Marilyn K. Kucharski	In honor of Edward J. McElligott Jr. Richard A. McGrath	In honor of Richard J. Rossman Charles A. Peters
In honor of James E. Donahue Jack and Judy Currie	In honor of Leon Murray Anonymous	In honor of Muriel C. Schmidt Dennis and Jane Neslusan

In honor of Roger Schmidt Dennis and Jane Neslusan	In memory of Robert W. Booth Michael D. and Mary Ann Brockelman	In memory of John and Florence Eveckovich Susan Miller
In honor of Richard G. Schulze Dana L. Campbell Jack and Judy Currie	In memory of Jacob O. Bowen Amy and Richard Bowen Christopher Hopkins Mr. and Mrs. Allen Horn Claire Williams	In memory of Alvonía H. Fitzhugh Ruth Ruben
In honor of James Shields Charles A. Peters	In memory of H. Perry Cavarly Anonymous	In memory of Vincent J. Fontana Mary M. Fontana
In honor of Obediah Stewart, Jr. Anonymous	In memory of W-4 David S. Cormey Joan P. and Wesley Cormey	In memory of Tom Furtado Elizabeth Bevan
In honor of Adele and Frank Volpe Frances Volpe	In memory of Sidney H. Curtis M.D. Linda W. Wilder-Curtis	In memory of Joseph B. Gervais, U.S. Navy, USS Decatur DD935 Audrey B. Gervais
In honor of Alice Weldon Charles R. and Meredith L. Nyberg	In memory of Delfio DaDalt Anonymous	In memory of Manning and Marjorie W. Goldense Bradford L. Goldense
Gifts In Memory of:	In memory of Carl Austin Helen Austin	In memory of Donna Halterman Steven Halterman
In memory of Royce Beatty Michael D. and Mary Ann Brockelman	In memory of Leonard John Darcangelo Dianne Simmons and Julie Kranert	In memory of Walter Hopkins Barbara Hopkins Willard
In memory of Jacob Bell Mr. Roger W. deBruyn and Ms. Deborah J. Howard	In memory of Gordan DeWolf Virginia and David Belforte	In memory of Robert S. Houston Beth F. Houston
In memory of Levis H. Benoit Ron and LuAnn Benoit	In memory of Helen L. Dooley John and Christine Ellis	In memory of Carl R. Hurtig Martha E. Hurtig
In memory of Edward W. Bettke II Edward W. Bettke	In memory of Sacket R. Duryee The George F. and Sybil H. Fuller Foundation	In memory of Gus and Priscilla C. Ide G. Reed Ide. Robert M. Jacobs Jr.
In memory of Shirley Bettke Edward W. Bettke	In memory of Alta Eaton Anonymous	In memory of Rick Jekinson Sam Cathey Daphne and Michael Stevens
In memory of Vincent B. Boniface Ruth Boniface	In memory of Margaret S. Eichorn Alvin A. Eichorn	In memory of Peter W. Kalika Kalika Household

In memory of Pauline F. Kightlinger Mark Kightlinger	In memory of Leonard J. Panaggio Leonard C. Panaggio	In memory of John and Bessie Rose Ellen M. and Steven R. Brill
In memory of Arthur Kingsbury Beverly Sivula	In memory of Susan C. Pease Rodney Pease	In memory of Janice Sargent and Warren N. Sargent Joane D. Warner
In memory of Jeanette Kream Dr. and Mrs. Richard (Dick) Zimon	In memory of Winifred Sawyer Putnam David S. and Lucinda Lee	In memory of Barbara G. Segal Ilene Segal
In memory of John M. Kucharski Marilyn K. Kucharski	In memory of Margaret E. Quigley-Keller Rachel Keller	In memory of Sumner Segal Ilene Segal
In memory of Beata Lagutowski Charles A. Peters	In memory of Corrinne L. Reid Albert J. Reid	In memory of Anne Simpson Rick Simpson
In memory of Barbara Branford Lepage Doreen and Bud LePage	In memory of Johns H. Rives Judith Peach Warren	In memory of Margaret S. Slaiby Slaiby Household
In memory of Robert Long Thomas Long	In memory of Barnes Riznik Timothy Wheeler	In memory of Connie Small Bill Howland
In memory of David B. Lyman Lisa M. Lyman	In memory of Ruth and Wolbert Roettgers Audrey Roettgers	In memory of Donald Smith Mrs. Donald S. Smith
In memory of Frances Malamy Michael and Jocelyn Malamy	In memory of Paul E. Rogers Anonymous Bruce Craven and Christie J. Higginbottom Robert F. and Cheryl T. Darling F.A. Bartlett Tree Expert Company Ann Marie Incutto Paul S. and Ann T. Rapo David F. and Susan M. Russell Judith and David Southland Stephen A. Spongberg Nancy A. Swiacki Cory O. and Joanne C. Van Buskirk	In memory of Evelyn L. Tarantino Anonymous
In memory of Dudley R. Marsh Edith Ryall		In memory of Edith-Anne Walto Robert Walto
In memory of Joan M. McGrath Anonymous James and Kristyn Dyer Richard A. McGrath Regina Vegliante		In memory of Deborah Dawn Zlotnick Mr. Walter Zlotnick
In memory of John W. Motyka Meredith W. Motyka		
In memory of Katherine Newton Peter Weston		

REDCOATS & REBELS: Winning the Battle of a Nation and the Hearts of our Visitors

On the weekend of August 3, 2019, Old Sturbridge Village hosted the largest military re-enactment in New England with our 16th annual “Redcoats and Rebels” event. For two days, the Village transformed into a military camp from the time of the War for Independence, showcasing what it was really like for those who fought to win America’s freedom – and for those they fought against.



John Collins Photography

Visitors witnessed and took part in a series of historic events, including mock battles and skirmishes, “School of the Soldier” training demonstrations, cannon demonstrations, and a “Service for the Troops.” In camp, visitors were immersed in the daily lives and trades of 18th century New England as re-enactors demonstrated historic methods of cooking, baking, and the making of common household items such as soap, brooms,

muskets, balls, buttons, and bowls. Families learned 18th century dances and kids took part in a drill with toy muskets. The battlefield hospital provided an opportunity for visitors to learn about smallpox inoculations and the treatment of wounded soldiers after battle. “Redcoats and Rebels is the largest reoccurring event in the Revolutionary War community, but the uniqueness is really in

the location,” said Jim O’Brien, Director of Public Events and Performance at Old Sturbridge Village. “Most reenactments do not get the opportunity to occupy an actual ‘village.’ Ours is a favorite among members of the reenactment community and our guests because they are secluded from the 21st century and immersed in the experience. Old Sturbridge Village has become an institution in their annual calendars.” 🦋

2019 GALA SUPPORTERS

We appreciate the dedication of the teams of people that help us produce the most enchanting evening of our season.

Gala Committee Members

Christina Predella, *Co-Chairman*
Rick Predella, *Co-Chairman*
Ann Marie Argitis
Jennifer Bailey
Paula Bowne
Sandy Carroll
Beckie Galonek
Kathy Harrington
Christine Lee
Sandy LeMieux
Charlie Peters
Kathy Vairo
Ron Vairo
Michael Villano

Sandy and Robert Carroll
Rebecca Casinghino
Cinemagic
Cohasse Country Club
Cormier Jewelers
CrossFit Ardor
Peter and Janice DeLisle
Dexter-Russell
Christian Di Spigna
Sean DuBois
Dudley Hill Golf Club
James A. Dyer
Dorothy Fullam
Beckie and Gary Galonek
Garieri Jewelers
Paul Girouard
Dan Gonya
Green Thumb Florist
Hanover Insurance
Kathy and Paul Harrington
Hearthstone Market
and Catering
Derek Heidemann
Hog Heaven
Infinite Granite
iRobot
Brock Jobe
Irma and Tally Lauter
Christine Lee
Sandy and David LeMieux
Mariah Gale Creative
Mendon Liquors
Monroe on Main
Meg Noyes
Oakholm Farm Estate
Terry and Mary O'Coin
Dennis O'Dowd
Paw Plaza
Charlie Peters
Phillip Leblanc Artworks
Michael Piatt

Gala Sponsors

All Star Incentive Marketing
Bond Construction Corporation
Country Bank
Load Controls, Inc.
Southbridge Credit Union

Gala Advertisers

Atlas Distributing Corporation
Charlton Family Practice
Clark Mailing Services
Mid State Sewerage Inc.
Charles A. Peters

Gala Auction Donors

Kate Alexander
Ann Marie and John Argitis
Babe's Lawn Care, Inc.
B.T.'s Smokehouse
Jennifer and Bill Bailey
Bonardi's Formalwear
Paula and David Bowne
Brimfield Winery
Michael Brockelman
Jeff and Martha Buchanan

Anthony Pioppi
Porterhouse Restaurant
& Lounge
Christina and Babe Predella
Rick and Peg Predella
The Publick House
Quaboag Book Shop
Rapscaillon Brewery
Rocky's Ace Hardware
Sadie Green's Curiosity Shop
Salem Cross Inn
Salon 484
Shelburne Museum
Simple Indulgence
Smith & Wesson
Southbridge Credit Union
Southern Tide
Stearns Dressed Meats
Stonebrook Studio & Design
Sturbridge Pottery
Sturbridge Seafood
Sturbridge Yankee Peddlar
The Sturbridge Host Hotel &
Conference Center
Subway
Target
Teddy G's Pub & Grille
Ted's Variety
Vaillancourt Folk Art
Kathy and Ron Vairo
Village Pizza
Michael and Stephanie Villano
Voguecare Electrolysis
& Skincare
Devon A. Whitehead
Whoopie-Doo & Cupcakes, Too!
Yankee Candle
Yankee Spirits

THOUGHT LEADERSHIP

The Leadership of Old Sturbridge Village works together towards a shared vision with a deep commitment to our mission.

Officers

Margaret H. Pierce, *Chairman*
Bichop J. Nawrot, *Vice Chairman*
N. Lynn Eckhert, *Secretary*
John J. Argitis, *Treasurer*

Trustees

Norman L. Abram
George F. Booth
Michael D. Brockelman
Susan B. Collins
Thomas S. Curren
Donna A. DeCorleto
Martha D. Hamilton
Brock W. Jobe
Alison C. Kenary
Cynthia B. Michener
Jane C. Nylander
Terence P. O'Coin
John H. Ott
Paul S. Rapo
Robert W. Reeder
Robert E. Roemer
Carol J. Rugani
Richard G. Schulze
Paul F. Scully
Jeffrey J. Upton
Michael T. Villano
Alexander J. Wall

Brad King, *Senior Vice President*
Tina Krasnecky, *Vice President, Finance*
Cara Massey, *Director of Annual Fund and Membership*
Dawn Merriman, *General Manager, Lodges*
Sarah B. Parks, *Coordinator of Special Projects*
David F. Rivett, *Director of Information Technology*
Dennis Santelli, *General Manager, Sales & Culinary*
Rhys Simmons, *Director of Interpretation*
Chris Tieri, *Chief Marketing Officer*
Joe Tortis, *Budget Director*
Dyan Vaughan, *Director of Foundation Relations*

Honorary Trustees

Ann Marie Argitis
J. P. Barger
John E. Bassett
Nancy B. Beatty
Richard W. Beatty
Richard A. Bellico
Edward W. Bettke
Michael D. Cimini
Kay L. Clausen
Linda Connly
John A. Currie
Nancy E. Dempze
Dorothy B. Derick
Richard B. Hardy
Reed Hillman
Janet S. Hollyday
Alison C. Kenary
Patricia B. Kiley
Marilyn K. Kucharski

Crawford Lincoln
David R. Maack
Frances W. Magee
Lisa W. Markham
Bruce D. Moir
Russell J. Peotter
Elizabeth H. Peppel
Wayne E. Phaneuf
Anthony C. Pini
Paul S. Rapo
Gay Reddig Mayl
Mary S. Risley
George B. Sanders
Alberta Sebolt George
Peter H. Tillou
Helen A. Titus
Virginia F. Wagenseller

Overseers

Charles A. Peters, *Chairman*
Jane E. Neslusan, *Vice Chairman*
David Badrick, *Second Vice Chairman*

Richard A. Altman
John E. Amorello
Rudy F. Arn
William Bailey
Jennifer Bailey
Ronald L. Benoit
LuAnn V. Benoit
Judith A. Bergin
Steven G. Bernhard
Lydia Blacker
Keith Blanchette
Ralph C. Bloom
Ruth B. Boniface
David Bowne
Paula Bowne
Dorothy D. Brandenberger
Gary L. Bridgman

David C. Brough
Jeff Burdick
Mary Bridget Burns
Richard L. Bushman
Desiree Caldwell Armitage
Philip Cambo
Kathleen Cambo
Lucille A. Canavan
Sandra Carroll
Deborah D. Cary
Matthew Clyburn
James R. Cottrell
Albert R. Cournoyer
Lisa C. Dalberth
Susan R. Daniel-Dreyfus
Jeffrey Davenport
Roger W. deBruyn
Peter B. Dirlam
Nancy Doll
Nancy Dussault Smith
Suzanne Fantaroni
Louis E. Fazen
Joan Ferguson
Douglas E. Fish
David G. Flinn
Marilyn Forke
William M. Fowler
Dorothy C. Fullam
Molly Galano
Gary Galonek
Janet E. Garon
Michael V. Gionfriddo
Molly J. Giordano
Patricia A. Goode
Robert W. Grant
Kathleen H. Harrington
Henry F. Hicks
Thomas J. Hollyday
Sara Hunt
Edward C. Johnson
James B. Kenary
Dennis R. Knight
Stephen LaRiviere
Sandra B. LeMieux
Tedd Levy
Arthur Maginas
Pamela I. Mahoney
Thea Marcoux

Jennifer Markham
Richard A. McGrath
Alfred L. McKee
Beatrice A. Miller
Elizabeth W. Moir
Anna Moir
Joanne Moore
Gail M. Morgan
Jesse R. Morgan
Patricia A. Morgan
Richard Nylander
Dennis C. O'Dowd
Lili R. Ott
Marion S. Palm
Michael Piatt
Christina Predella
Richard Predella
Shirley I. Reichenberg
William B. Reid
Joyce M. Rivers
Richard J. Rossman
Frederick S. Rushton
Daniel W. Schreck
Josephine G. Sheldon
Dorothy Shelton
Charles T. Skillings
Madeline Smola
Matthew Sosik
Karen A. Spiewak
Megan K. Suslavich
Todd Tallman
Anne M. Tarbell
Jack C. Thornton
Judith A. Thornton
Christine Tieri
Stephen D. Tutko
Gary F. Vaillancourt
Ronald J. Vairo
Kathy D. Vairo
Mason B. Wells
Michael D. Wells
Barbara H. Wuth
Richard P. Zimon
Joseph Zwiebel
Raki Zwiebel

OLD STURBRIDGE ACADEMY
Trustees

Reed Hillman, *Chairman*
Jasmin Rivas, *Vice Chairman*
Keith Blanchette, *Treasurer*
Pamela Boisvert, *Secretary*

Vivian Brooks
Linda Denault
Louis Fazen III
Amy Herman
James Korman
Richard McGrath
Jessica Miller

*Victoria participates in Virtual Village
from Old Sturbridge Village.*



© Victoria Haynes Illustration

"How do I know this is recording Kitty?"

THANK YOU DONNA DECORLETO

Donna DeCorleto is a familiar face to many at Old Sturbridge Village. A Trustee since the 1990s and former Chairman of the Board, Donna is deeply dedicated to the mission of the Village, despite the nearly 400 miles of distance between Sturbridge and her home in Alexandria, Virginia where she is an active volunteer with WETA public broadcasting and the Smithsonian. A history buff, Donna is an avid collector of maritime artifacts and figurines made by French prisoners of war during the Napoleonic Wars.

Having grown up in nearby Connecticut, Donna recalls visiting the Village in its early years. "My first time at Sturbridge was not too many years after it first opened. I was 6 or 7 years old and my parents took me there," she recalled. "I just fell in love with it immediately. As a treat, once a year my mom would take me back." Though her career at the Federal Reserve took her away from the area, Donna found her way back to us. "I did get disconnected from Sturbridge for a number of years, and then I reacquainted myself in the late 1980s / early 1990s when I would go to Brimfield. I started making very, very modest donations and after several years of small donations, they called me and asked me to be on the Board. I came on because I loved Sturbridge."

Donna is proud of the time she has served as a Village Trustee. Her term as Chairman is credited with enhancing the familial atmosphere amongst the Village staff and Trustees

and leading the Village in the development of a multi-year strategic plan. She is especially excited by the momentum the museum has gained under Jim Donahue's leadership. "I hope he'll see this all as his legacy," she said. "What he's done with Coggeshall, what he's done with the Academy. Brad King [Senior Vice President] talked to me in 1996 about solar power for the museum and now Jim has gotten him a solar field. I think we can be a model for other museums, I really do. I'm very hopeful for what we're going to accomplish in the future."

As a member of the George Washington Wells Society, Donna has included Old Sturbridge Village in her estate plans. "I decided to do it because I want Sturbridge to continue. Sturbridge can give people a lot of hope for the future; fascinate them about the past, yes, but give them hope for the future. So, I wanted Sturbridge to have the money, to continue what it's doing and



Donna DeCorleto

make it even better. I think a lot of people think you've got to be a millionaire to leave money to an organization, and you don't have to be. Regular people like me can and should do it." 🦋



WELCOMING NEW AMERICAN CITIZENS ON INDEPENDENCE DAY

Independence Day celebrations at Old Sturbridge Village are always special, taking visitors back to our nation’s roots with the opportunity to participate in a citizens’ parade, play 19th century style baseball, march alongside militia, make a tri-cornered hat, and sign their own “John Hancock” on a giant copy of the Declaration of Independence. Six costumed interpreters rendered the

words of the Declaration line by line, assisted by a narrator who set the context to its meaning and challenged the audience to consider the impact in modern day. Visitors also enjoyed the firing of our working model “Heavy 3-Pounder” cannon. The most meaningful event of the celebration, however, was the hosting of an on-site Citizen

Naturalization Ceremony. The U.S. Citizenship and Immigration Services (USCIS) presented candidates to the United States District Court for the District of Massachusetts. Those taking part in the ceremony pledged their Oath of Allegiance to the United States for the very first time – a moment shared in a place with so much U.S. History, on the day of the nation’s birth. Old Sturbridge Village singers complemented the ceremony with the performance of patriotic songs. 🐛

ANNUAL REPORT CONTRIBUTORS

Special thanks to our team of experts that contributed to the accuracy of this report.

FEATURE ARTICLES:

- Caitlin Emery Avenia, Curatorial Director
- Jocelyn Bolduc, Extended Day Program Coordinator
- Lisa DeTora, Principal
- Emily Dunnack, Director of Education
- James A. Dyer, Director of Major and Planned Giving
- Brad King, Senior Vice President
- Eleanor Langham, Program Coordinator, Coggeshall Farm Museum
- Cara Massey, Director of Annual Fund and Membership
- Sarah B. Parks, Coordinator of Special Projects
- Robert E. Roemer, Trustee
- Rhys Simmons, Director of Interpretation
- Chris Tieri, Chief Marketing Officer



FINANCIALS AND DONOR LISTS:

- James Connally, Coordinator of Boards and Trustee Relations
- Tina Krasnecky, Vice President, Finance
- Amanda McDermott, Development Operations Associate
- Julia Turgeon, Development Associate
- Dyan Vaughan, Director of Foundation Relations
- Devon Whitehead, Development Assistant



ADDITIONAL THANKS:

- Katherine Fecteau, Assistant Curator
- Maryann Gubala, Community and Content Coordinator
- Nathan Hardt, Marketing Manager
- Victoria Haynes, Coordinator of Households and Foodways
- Michael Heenan, Executive Chef
- Derek Heidemann, Coordinator of Historic Trades
- Amy Hietala, Research Librarian
- Sam Naring, Visitor Services Coordinator
- Elizabeth O’Grady, Coordinator of Museum Education
- Dennis Santelli, General Manager
- Shawn Vallee, Creative Director





1 Old Sturbridge Village Road
Sturbridge, Massachusetts 01566

NONPROFIT ORG.
U.S. POSTAGE
PAID
Worcester, MA
Permit No. 2



Join us on Facebook, Instagram and YouTube for Virtual Village – where we will be bringing Old Sturbridge Village into your home. Our interpreters will be sharing fun facts, activities, recipes and more, while our farmers have promised to update us with photos and videos of our animals. We hope our Virtual Village will provide a bright spot in your day – and keep your whole family entertained and engaged.